



UCI Samueli

School of Engineering

UCInspire
&
3+2 Program

University of California



Davis



Irvine



Los Angeles



Santa Barbara



Berkeley



Santa Cruz



Riverside



San Diego



San Francisco



Merced



Numerous High Tech
Companies in California,
Great Job Opportunities

Pleasant Mediterranean Climate

World Class Cultural
and Entertainment
Destinations

Irvine is the Safest
City of its size in the
U.S. for 10 years



Irvine is located in Orange County,
Which is the Largest Hub in the U.S. for
Biomedical Devices Companies (over
400)

Southern California





#1

Best College
in the U.S.
MONEY



UCI University of
California, Irvine

#1

Best Value

**Public university
in the U.S.**

— Forbes



#1 University

doing the most for the American dream

- *The New York Times*
College Access Index



Public University

in the U.S. by *U.S. News & World Report*



Rose



Rowland



Reines

3

Nobel Laureates





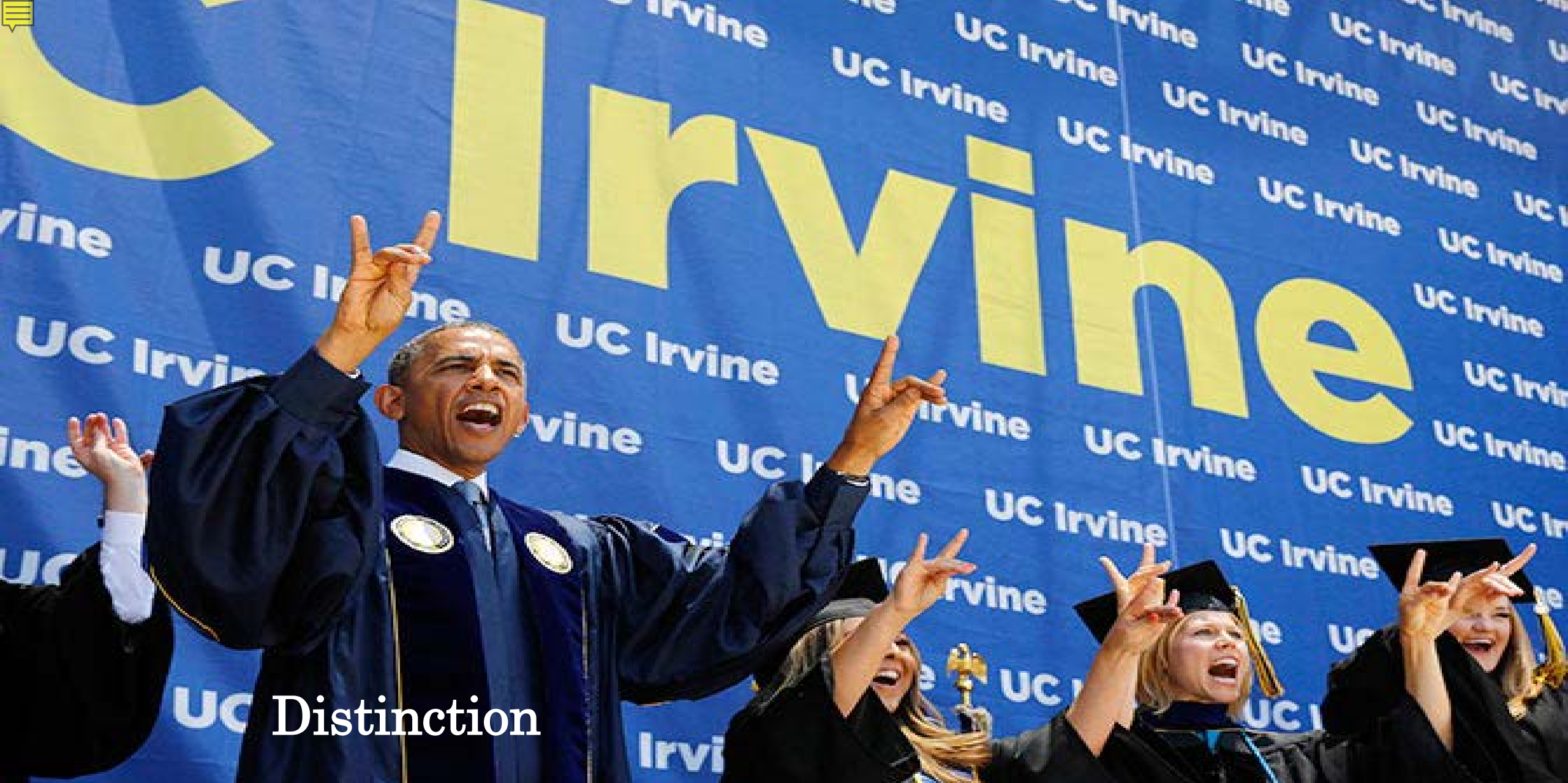
U.S. NEWS & WORLD
REPORT ENGINEERING
PROGRAM RANKINGS

21ST

PUBLIC
UNIVERSITY
GRADUATE
PROGRAM

24TH

PUBLIC
UNIVERSITY
UNDERGRADUATE
PROGRAM



Distinction





Admissions

Average Incoming Students:

- SAT scores (math):
664 (88th percentile)
- GRE scores (quantitative):
162/170 (84th percentile)



Enrollment

- 3728 Undergrad, 961 Grad
- 6 Departments
- 12 Engineering Programs
(11 accredited)

Departments

- **Mechanical and Aerospace Engineering**
- **Civil and Environmental Engineering**
- **Electrical Engineering and Computer Science**
- **Chemical & Biomolecular Engineering**
- **Materials Science & Engineering**
- **Biomedical Engineering**

Research Thrusts

- **Communication and Information Technology**
- **Human Health/biomedical**
- **Energy/water research**
- **Rapid Manufacturing**





FACULTY



139



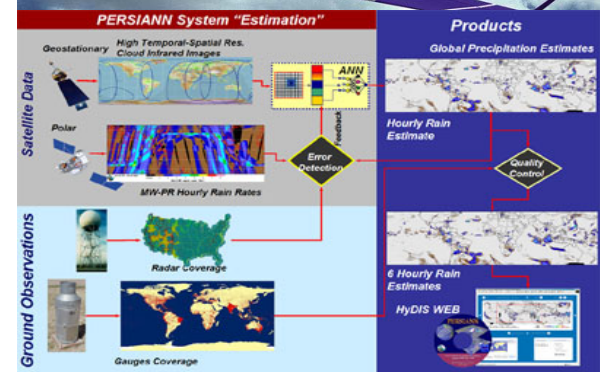
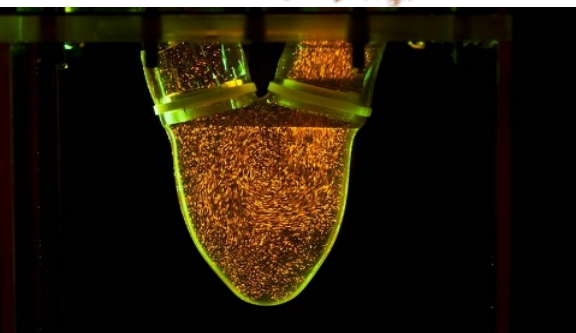
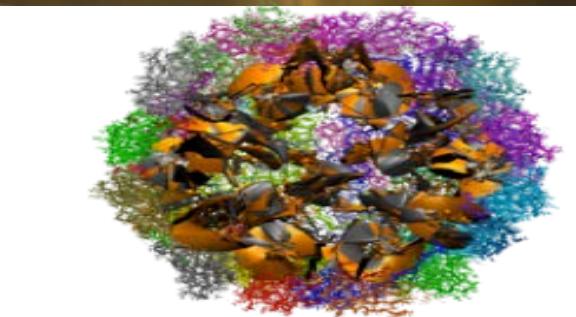
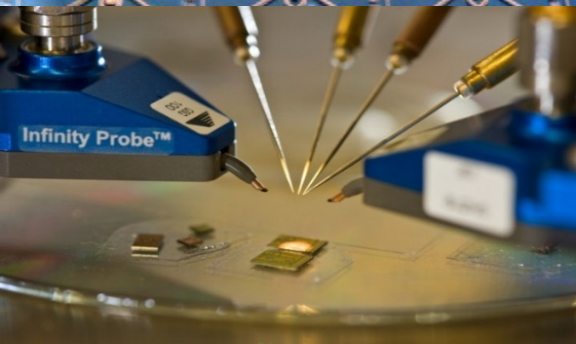
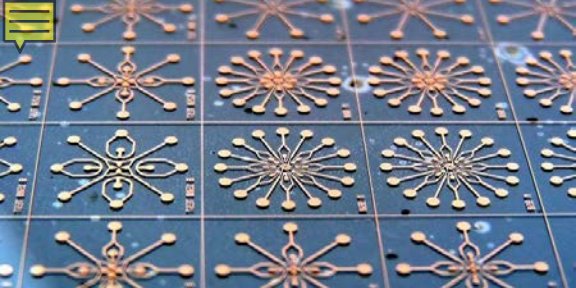


14

NATIONAL ACADEMY
OF ENGINEERING

Major Research Centers

- California Institute for Telecommunications and Information Technology
- Integrated Nanosystems Research Facility
- Center for Embedded Computer Systems
- RapidTech – Rapid Design and Manufacturing
- **Center for Advanced Design and Manufacturing of Integrated Microfluidics**
- Edwards Lifesciences Center for Advanced Cardiovascular Technology
- Beckman Laser Institute (BLI)
- Center for Hydrometeorology and Remote Sensing
- **Advanced Power and Energy Program**
 - **The National Fuel Cell Research Center (NFCRC)**



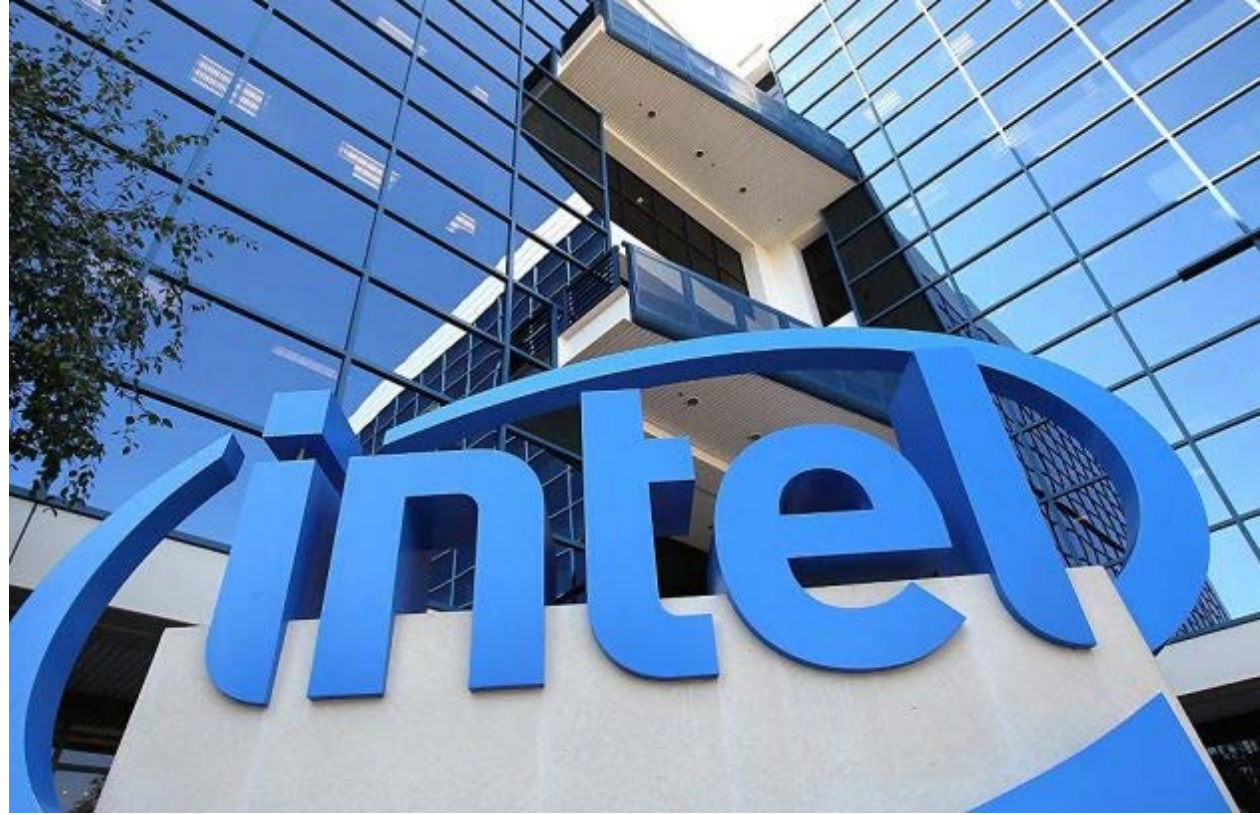
EXPERIENTIAL LEARNING





100%

Supreme



Corporate Partners

***NORTHROP
GRUMMAN***





UCInspire Program

10-Week Undergraduate Research Program

Key Benefits

- Experience cutting-edge research
- Differentiate your graduate application
- Opportunity to obtain a “Letter of Recommendation” from top research faculty
- 6 units of research credits
- Completion of a research project
- Publication Opportunity



Key Benefits

- **Enhance your English proficiency**
- **Increase your collaborative skills**
- **Professional Development**
- **Technical Communication Skills**
- **Immerse yourself in the American culture**





Requirements

- **Engineering or Science Major**
- **TOEFL: 85+ or IELTS 6.5**
- **GPA requirement: 3.3 or higher (on 4.0 scale)**
- **Prior Research is a Plus**

Estimated Cost



Application and F1 Visa Fee.....\$750



Mandatory Campus Fee.....\$265



Program Fee and Tuition.....\$3585



Research Expense.....\$2000



Health Insurance (10 weeks).....\$500



Housing Expense.....\$2100

TOTAL.....\$9200

Timeline 2019

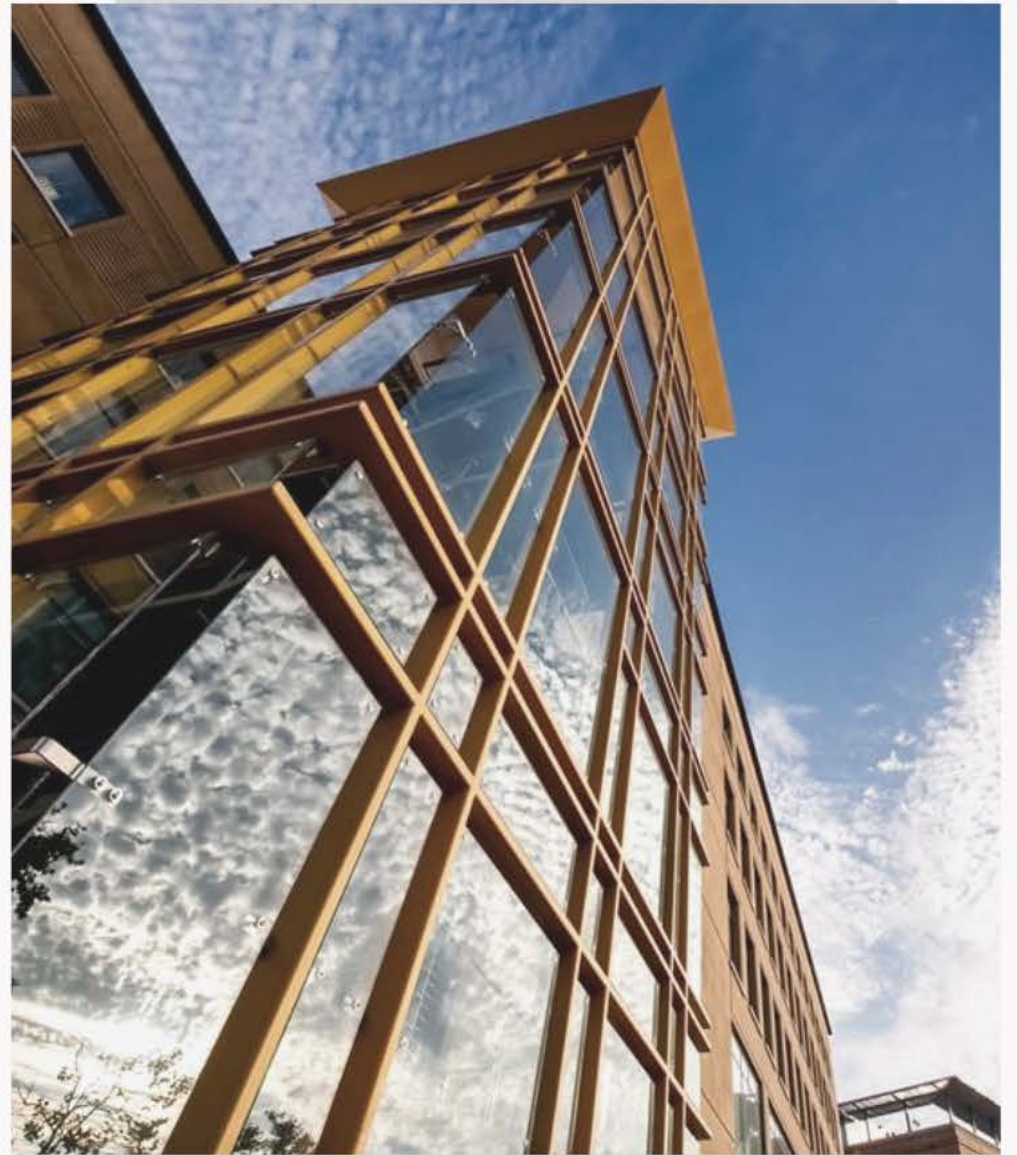
- **Application Open Date: November 1, 2019**
- **Application Deadline: January 15, 2020**
- **Online Interview: January 16 – February 22, 2020**
- **Project Matching and Acceptance Letter:
February 26 – March 22, 2020**
- **Start Applying for Visa: March 22, 2020**





Application

- **Online Application**
- **One-page Personal Statement**
- **CV/Resume**
- **Official Transcript**
- **Your Top Five (5) Faculty Choices**
 - **If no faculty matches your interest, please indicate your preferred professor whose research area best aligns with your interest**
- **Two References Contact Info**



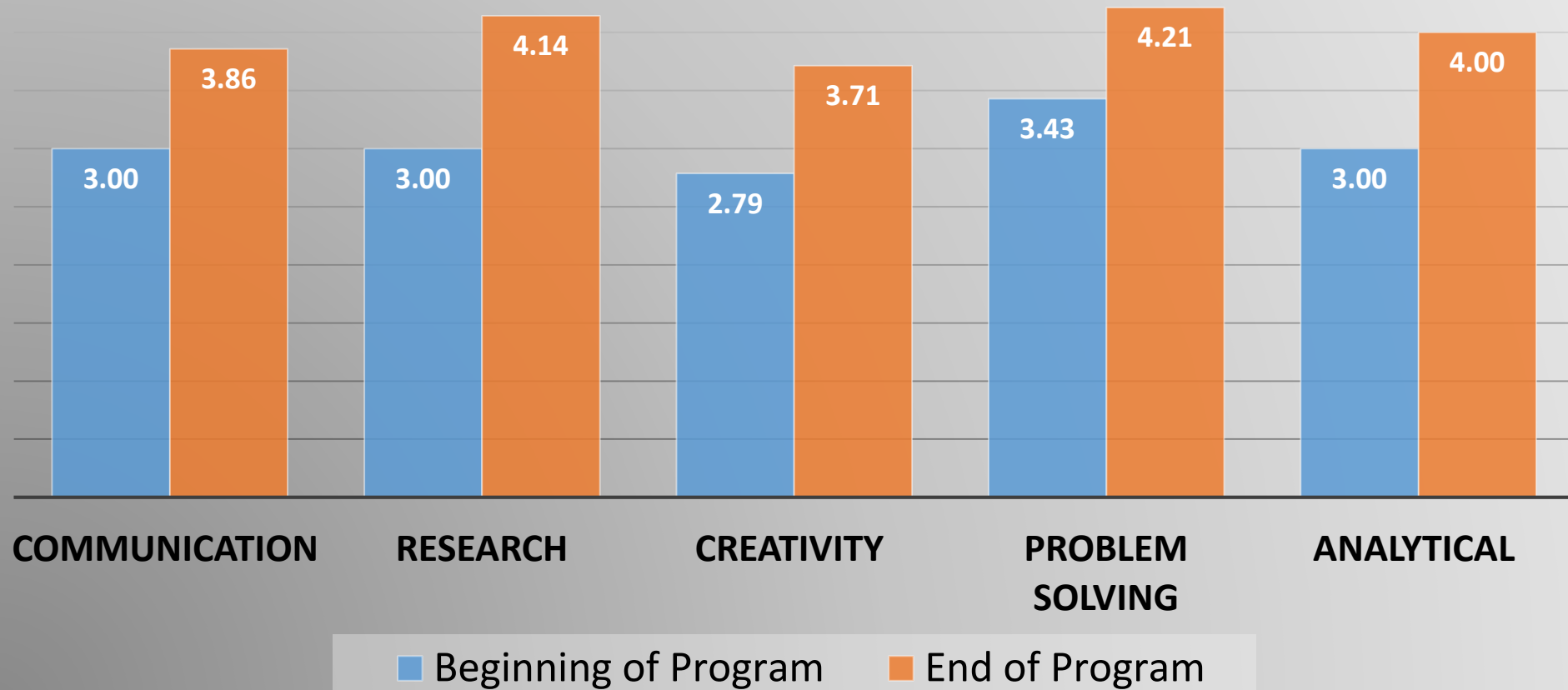


FEEDBACK FROM STUDENTS

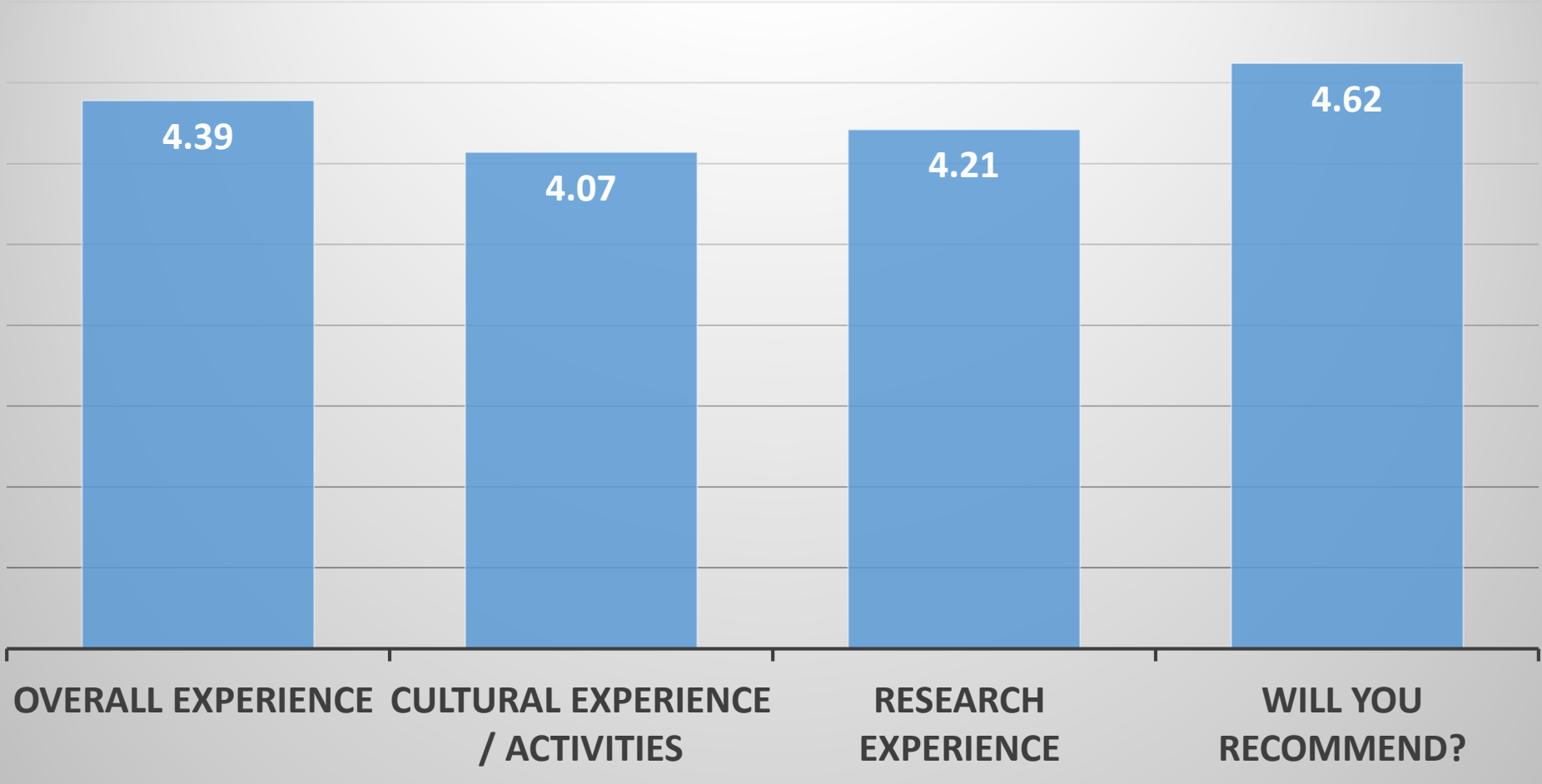


Feedback from Students

Necessary Skills for Graduate School (Scale from 1 to 5)



Overall Rating (On a Scale of 1-5)





**Where are they now?
2016-2018 UCInspire Students**

PhD, Boston University

PhD in ECE Department, Arizona State University

DPhil in Inorganic Chemistry, **Oxford University**

Masters or PhD, University of California, Irvine

Masters in Mechanical Engineering, UCLA

Masters in Philosophy, The Hong Kong Polytechnic University

PhD, National University of Singapore

Masters Program in ECE, at Duke University

Master of Science in Electrical Engineering, University of Pennsylvania

Masters Program in ECE, at University of Texas at Austin

PhD in Engineering Science, **Dartmouth**

PhD, University of Maryland

PhD, UCLA

Masters of Science, **John Hopkins** Bloomberg School of Public Health

PhD, Boston University

Masters, Language Technologies Institute, **Carnegie Mellon**

PhD, University of Hong Kong

PhD, National University of Singapore

PhD in Computer Science, Penn State

PhD in Fluid Mechanics, **John Hopkins** University

University of Illinois, Urbana-Champaign

Masters in TBSI, Tsinghua University

Masters of Computer Science, Washington University

PhD, University of California, San Diego

Masters of Engineering, Cornell University

Masters, University of Southern California

PhD in Mechanobiology, National University of Singapore

PhD, **Carnegie Mellon** University

William and Mary, Ivy League

Masters, **Carnegie Mellon**

MS, Department of Computer Science, **Northwestern University**

MS, Mechanical Engineering, University of Michigan, Ann Arbor

PhD, UT Austin

MS, **Carnegie Mellon University**

MS, Computer Science Department, Johns Hopkins University

Duke University Biomedical Engineering

IMSE doctorate program at Washington University in St.Louis

PhD, Computer Science, Purdue University

University of Illinois, Urbana-Champaign

MS, CE, Georgia Institute of Technology)

PhD, Material Science and Engineering, UIUC

MS, CS of Dartmouth



3+2 Engineering Program

**BACHELOR'S DEGREE FROM HOME INSTITUTION,
MASTER'S DEGREE FROM UCI**



Majors

- Electrical Engineering
- Computer Engineering
- Biomedical Engineering
- Civil Engineering
- Transportation Engineering

M.S. Options:

- Corresponding Majors (Courses or Thesis), BME (Thesis Only)
- Engineering Management (6 courses in Engineering & 6 courses in MBA)
- Network Systems
- MECPS (Internet of Things, Master of Engineering)

3+2 Program is a pre-approved program of study

SUMMER

1

- 4-Week ESL (Optional)
- Scientific Writing Course
- GRE Preparation

- Create a List of Graduate Programs
- Begin Writing Statement of Purpose

FALL

2

- UCI Engineering Courses
- Grad School Preparation Seminar

- Finish writing Statement of Purpose
- Submit Graduate Program Applications

WINTER

3

- UCI Engineering Courses

- Receive Graduate Admissions Decisions

SPRING

4

- UCI Engineering Courses



Requirements

- **Must be an Engineering Major**
- **Complete at least three full academic years at home university**
- **TOEFL: 85+ or IELTS 7**
- **GPA requirement: 3.3 or higher (on 4.0 scale)**



Expenses (Prices subject to change)

Tuition and Required Program Fees for the 2020 10-month 3+2 Academic Study Abroad Program September 1, 2020 – June 15, 2021

Included in the Price

Application Fee, non-refundable	\$200
Course Tuition & all academic and service components	\$31,050
Student Services Fee (includes UCI photo ID, UCI Net ID (email and internet service on campus), one copy of official transcripts)	\$750
Total	\$32,000

Health Insurance: $\$585/\text{quarter} \times 3 = \$1,755/\text{year}$. Students must provide proof of sufficient insurance and submit the insurance waiver if they do not purchase the plan through UCI DCE.

We do not offer on-campus housing. UCI only guarantees housing for freshmen and Ph.D. students. However, there are off-campus apartments available to offer a convenient living environment as well as the opportunity to meet, study, and interact with full-time UC Irvine students and other students visiting from around the world. We can also recommend housing vendors if needed.

Approximate Total Cost including health insurance and living expenses: \$51,725

IMPORTANT DATES



*Individual program application deadline may vary. Please refer to UCI Graduate Division's website for the finalized date.

Statistics 2019

81 Participating Students:

- 4 students in Ph.D. program at UCI
- 59 students graduate or in M.S. program at UCI
- 15 students went to other graduate programs in the U.S.
(UC Berkeley, Cornell, Carnegie Mellon, etc.)
- 2 returned to China after Year 1
- Only 1 was not admitted due to low GPA at UCI



UCI Samueli
School of Engineering

Master of Engineering Presentation

Graduate and Professional Studies
gradengr@uci.edu



UCI Samueli
School of Engineering

Why M.Eng?

A Master's degree gives students the opportunity to gain a deeper technical understanding in the subject they chose. M.Eng goes beyond technical training and prepares its graduates for **employment** in industry and **maximizes career opportunities**.

Other reasons...

- ✓ Change your career trajectory
- ✓ Increase your potential earnings
- ✓ More competitive in job search and employment opportunities



The M.Eng Difference

Masters of Science		Professional Master
Thesis	Comp Exam	Capstone Project
36-48 units	36-48 units	40 units
Research with faculty advisor	All coursework	Experiential learning + professional development curriculum
Published thesis	Comprehensive exam	Capstone project
2 years/6 quarters	3 to 5 quarters	3 quarters (*can be extended up to 2 quarters)



The M.Eng Difference

- M.Eng features **entrepreneurship and leadership training** that sharpens students workplace skills and provides basic knowledge of product conception, development and launch.
- The M.Eng program requires students to **acquire integrative knowledge of systems**, as well as **hands-on knowledge and experience**.
- The Capstone Project provides an opportunity to work on **real-life problems** with faculty and industry partners.
- Students are trained in the technical aspects of their specialization and preparing graduates for **entrepreneurial and intrapreneurial leadership opportunities**.
- Dedicated **Career Center** staff to support you and your goals



Concentrations

Biomedical Engineering

BioENGINE

Civil and Environmental Engineering

Water and Energy Nexus

Structural and Earthquake Engineering

Electrical Engineering and Computer Science

Digital and Image Signal Processing

High-speed Communications Circuits and Systems

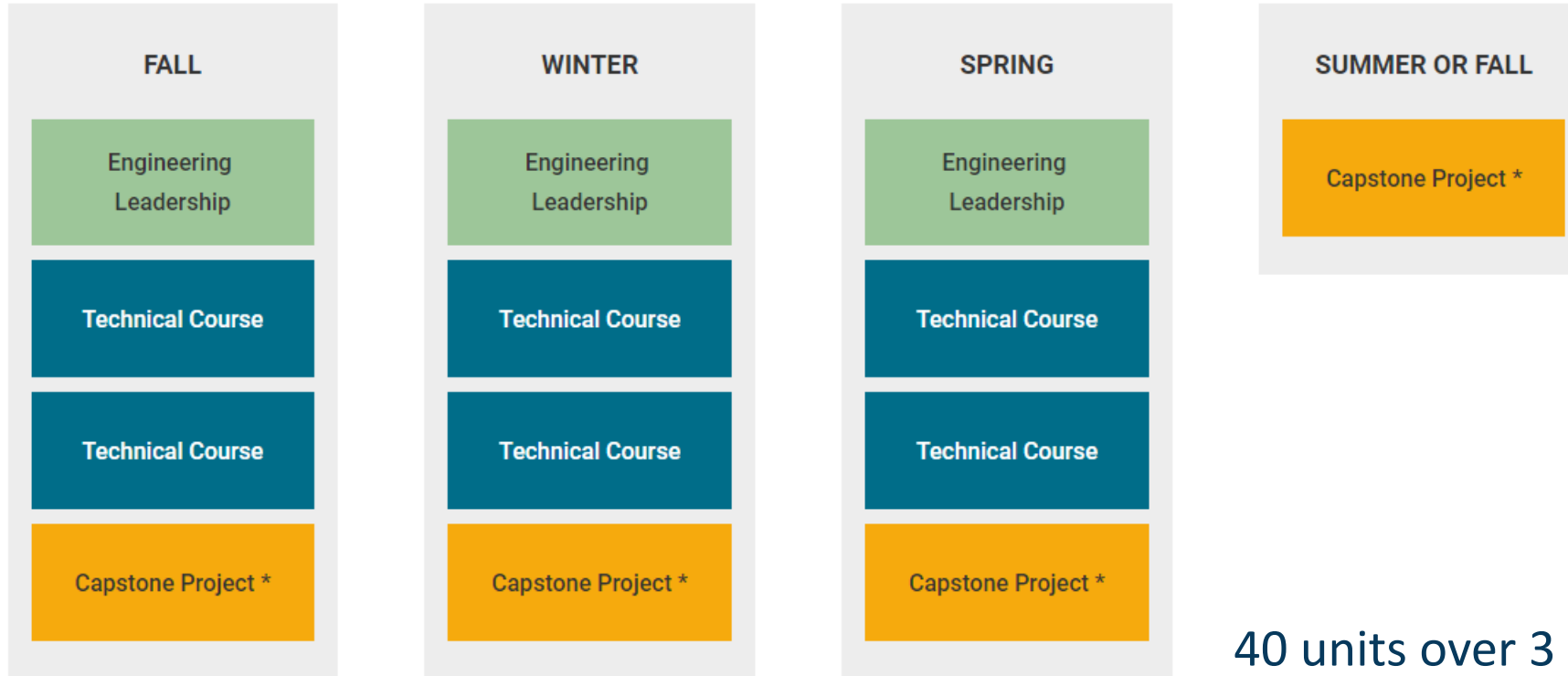
Mechanical and Aerospace Engineering

Nanotechnology

Energy Systems



Degree Requirements



* Students will enroll in 8 units for their capstone project.

40 units over 3 quarters:

- 3 leadership courses
- 6 technical courses
- 2 quarters of Capstone Projects



Capstone Project

- The Capstone Project provides an opportunity to work on **real-life problems** with faculty and **industry partners**.
- There are two kinds of Capstone Projects:
 - Faculty Projects
 - Students will work on a project proposed by UCI School of Engineering faculty supporting the professors research program, lab, or partners outside the university
 - Partner Projects
 - Students working on partner projects are advised by partner organization technical experts from industry, national labs, or academic institutions.
 - Note that all partner projects have a faculty representative from within the UCI School of Engineering.
- Deliverables
 - Technical skills- may include prototypes, experiments, data analyses, etc.
 - Project and team management- may include project charter, project plan, stakeholder engagement strategy, etc.
 - Reporting deliverables



CAREER DRIVEN

- The program is focused on preparing graduates for **employment and entrepreneurship through leadership training.**
- Curriculum designed to **develop technical managers in large companies and entrepreneurs launching their own enterprises.**
- M.Eng specialized, **dedicated career center** supports students through seminar classes, workshops, and one on one appointments.





Admissions Process Overview

Application Materials:

- Online application
- Application Fee
- [GRE scores](#)
- [TOEFL or IELTS \(if applicable\)](#)
- GPA: 3.0 min requirement
- Bachelor Degree in Engineering or Computer Science
- University Transcripts from every college attended
- Three letters of recommendation

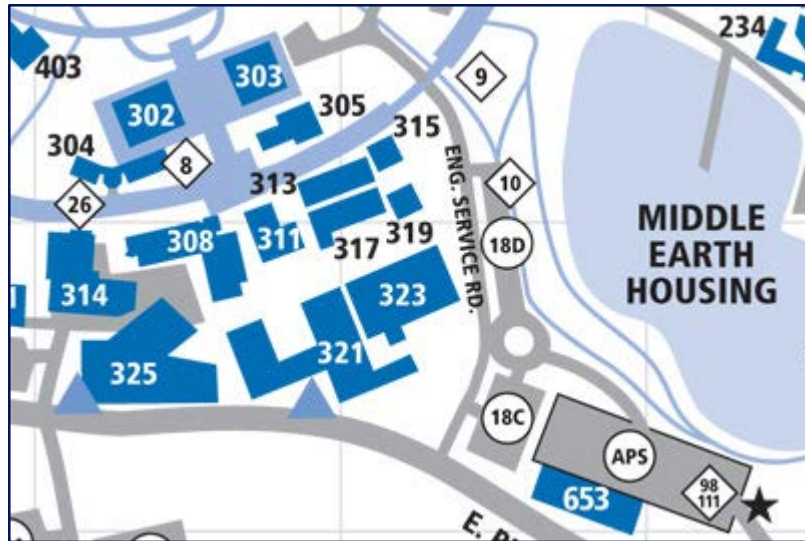
Applications are open now for Fall 2020

Deadline is March 15, 2020



Thank you for showing interest in the
Professional Master of Engineering program.

Any questions?



Graduate and Professional Studies
204 Rockwell Engineering Center
(#311 on the campus map)

Office Hours:
Monday – Friday
9am–12pm and 1–4pm
Voice: (949) 824-8090
Email: gradengr@uci.edu





Explore Sunny Orange County!

Did you know there are 278 sunny days in Orange County?

▶ 37A



▶ 33A



38



▶ 38A

34



▶ 34A



Dining

Orange County has the best Chinese food in the United States

Unexpected Romance



0110G463544



0110G463544



UCInspire: 10-Week Undergraduate Research Program

INTERNATIONAL STUDENT PROGRAM IMMERSIVE RESEARCH EXPERIENCE

[Home](#) [About](#) [Research Projects](#) [Program Activities](#) [Student Life](#) [Requirements and Important Dates](#) [Application](#) [Contact Us](#)

Home



The University of California, Irvine (UCI, UC Irvine, or Irvine) is a public research university located in Irvine, California and one of the 10 general campuses in the University of California (UC) system. UCI's Orange County campus is the fifth-largest in the UC system, with over 28,000 students, 1,100 faculty members and 9,000 staff. Click [here](#) for another video.

LANGUAGES

› [中文](#)



UCI ENGINEERING NEWS

› [Where supply meets demand](#)

October 28, 2019

UCI STEM Career Fair serves both students and employers

› [Biomedical engineer Chang Liu named one of only five Moore Inventor Fellows nationwide](#)

October 15, 2019

› [UCI scientists reveal mechanism of electron charge exchange in molecules](#)

October 14, 2019



STAY CONNECTED
sites.uci.edu/ucinspire



The UC Irvine 3+2 Engineering Program

Bachelor's Degree from Home Institution, Master's Degree from UCI

UCI University of California, Irvine



- Home
- About ▾
- Program Details ▾
- Current Students ▾
- Contact Us
- FAQ
- 中文



Click [here](#) to watch our promo video.

The UC Irvine 3+2 Engineering Program, organized by The Samueli School of Engineering (HSSoE), The UC Irvine 3+2 Engineering Program is a two-year academic program that allows students to obtain both a B.S. degree from their home

UCI Engineering News

[Where supply meets demand](#) October 28, 2019

[UCI STEM Career Fair serves both students and employers](#)

[Biomedical engineer Chang Liu named one of only five Moore Inventor Fellows nationwide](#) October 15, 2019

[UCI scientists reveal mechanism of electron charge exchange in molecules](#) October 14, 2019

[Breakthrough has applications in data storage, energy conversion, quantum computing](#)



STAY CONNECTED
sites.uci.edu/engr32



UCIrvineEngineering

加州大学欧文分校工学院官方公众号

3 original creations 44 friends following

[View](#)

[Unfollow](#)

学院概况

招生信息

精彩内容

Thursday 9:58 PM



【院系介绍】UCI材料科学与工程系

带你走进 UCI Samueli 工学院的材料科学与工程系，每次推送介绍一个工学院院系，希望大家多多关注。



WECHAT

@UCIrvineEngineering

< 返回



UCIrvineEngineering

关注 124 | 粉丝 480

加州大学欧文分校工学院官方微博 Samueli School of Engineerin...

主页 微博 相册



UCIrvineEngineering

10-24 来自 Weibo.intl

UCI从美国疾病控制与预防中心（CDC）和有毒物质与疾病管理局（ATSDR）获得100万美元的资金，用于研究全氟和多氟烷基物质（PFAS）污染的饮用水与健康之间的关系。

[网页链接](#)



微博内打开



WEIBO

@UCIrvineEngineering



Dr. Lily Wu

**Director of Academic Innovation,
Programs**
Samueli School of Engineering
1080 Anteater Instruction and
Research Building,
University of California, Irvine
Irvine, CA 92697-2700
Phone: (949) 824-4613
Email: ucinspire@uci.edu
Email: engineering-3plus2@uci.edu



Kristin Roher

**Program Coordinator,
International Programs**
Samueli School of Engineering
1080 Anteater Instruction and
Research Building,
University of California, Irvine
Irvine, CA 92697-2700
Email: ucinspire@uci.edu
Email: engineering-3plus2@uci.edu



Olivia Chang

**Program Assistant,
International Programs**
Samueli School of Engineering
1080 Anteater Instruction and
Research Building,
University of California, Irvine
Irvine, CA 92697-2700
Email: ucinspire@uci.edu
Email: engineering-3plus2@uci.edu