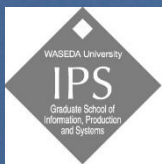



# 早稻田大学



WASEDA University  
早稻田大学

Graduate School of Information, Production and Systems



— Introduction —  
of  
Waseda University

# UNIVERSITY HISTORY TIMELINE

Brief Introduction

1882

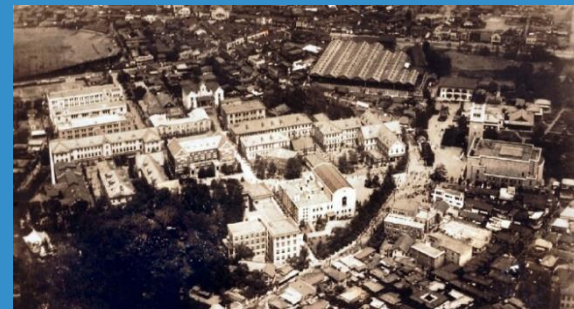


**Established in Tokyo  
By Shigenobu Okuma**

**Shigenobu Okuma**



**Tokyo Senmon Gakko**



**Co-founders for Communist Party of China**  
**Mr. CHEN, Duxiu & Mr. LI, Dazhao**



**1884**

**Started accepting  
International students**

**Started off with 80 Students**

**3 departments**

- Political Science & Economics
- Law
- Science



**1900**

**Started sending Japanese students to overseas**

**First accepting country was Germany**



**1908**

**Faculty of Science and Engineering  
was established**

**IPS belongs to this faculty**

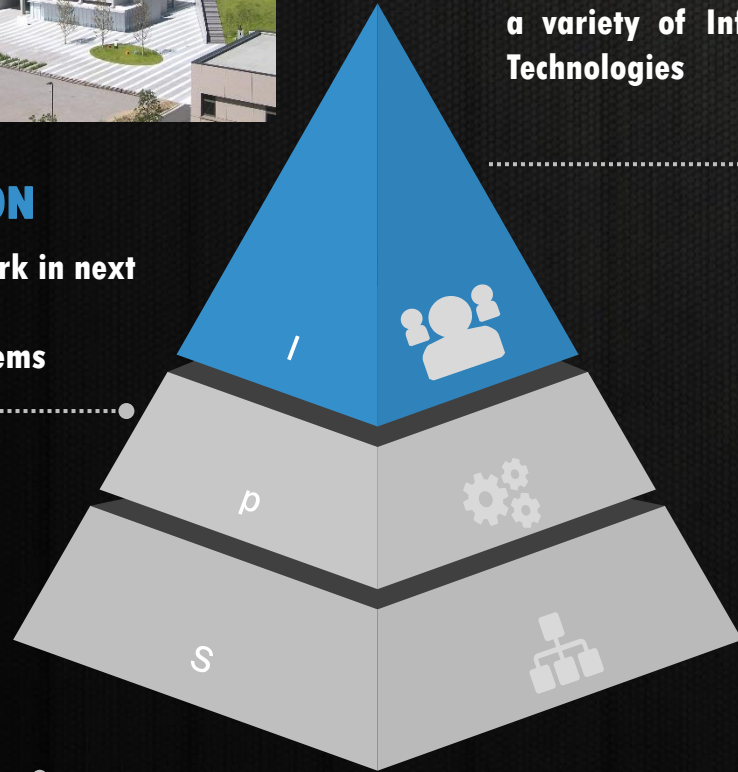


## INFORMATION

Designing the future with a variety of Information Technologies

## PRODUCTION

Putting IT to work in next Generation production systems



## INTEGRATED SYSTEMS

Development of System LSI, the mainstay of tomorrow's industry

1982

100<sup>th</sup> Anniversary



2003

Graduate School of Information, Production and Systems (IPS) was established in Kitakyushu-city, Fukuoka-prefecture.

2012

130<sup>th</sup> Anniversary celebrated

present



Faculty of Political Science and Economics

- ◆ School of Political Science and Economics
- ◆ Graduate School of Political Science
- ◆ Graduate School of Economics
- ◆ Institute for Research in Contemporary Political and Economic Affairs

Faculty of Law

- ◆ School of Law
- ◆ Graduate School of Law
- ◆ Institute of Comparative Law
- ◆ Center for Professional Legal Education and Research

Letters, Arts and Sciences

- ◆ School of Culture Media and Society
- ◆ School of Humanities and Social Science
- ◆ Graduate School of Letters, Arts and Sciences

Faculty of Education and Integrated Arts and Sciences

- ◆ School of Education
- ◆ Graduate School of Education
- ◆ Graduate School of Teacher Education
- ◆ Institute for Advanced Studies in Education

Faculty of Commerce

- ◆ School of Commerce
- ◆ Graduate School of Commerce
- ◆ Research Institute of the Faculty of Commerce
- ◆ Graduate School of Finance
- ◆ Graduate School of Accountancy

Faculty of Social Sciences

- ◆ School of Social Sciences
- ◆ Graduate School of Social Sciences

Faculty of Science and Engineering

- ◆ School of Fundamental Science and Engineering
- ◆ School of Creative Science and Engineering
- ◆ School of Advanced Science and Engineering
- ◆ Graduate School of Fundamental Science and Engineering
- ◆ Graduate School of Creative Science and Engineering
- ◆ Graduate School of Advanced Science and Engineering
- ◆ Research Institute for Science and Engineering
- ◆ Graduate School of Global Information and Telecommunication Studies
- ◆ Global Information and Telecommunication Institute

◆ **Graduate School of Information, Production and Systems**

- ◆ Graduate School of Environment and Energy Engineering
- ◆ Environmental Research Institute

Faculty of Human Sciences

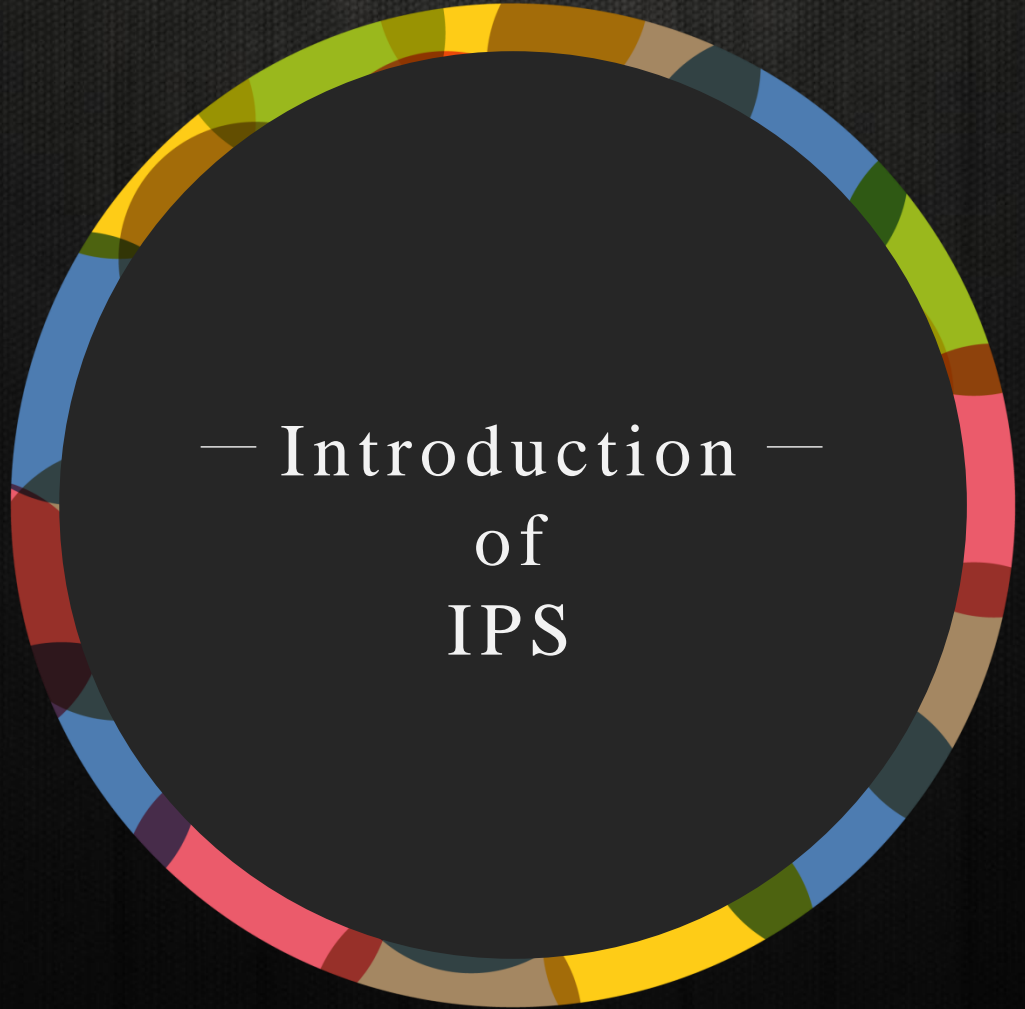
- ◆ School of Human Sciences
- ◆ School of Human Science (E-School)
- ◆ Graduate School of Human Sciences
- ◆ Advanced Research Center for Human Sciences

Faculty of Sport Sciences

- ◆ School of Sport Sciences
- ◆ Graduate School of Sport Sciences
- ◆ Institute for Sport Sciences

Faculty of International Research and Education

- ◆ School of International Liberal Studies
- ◆ Graduate School of International Culture and Communication Studies
- ◆ Graduate School of Asia-Pacific Studies
- ◆ Institute of Asia-Pacific Studies
- ◆ Graduate School of Japanese Applied Linguistics
- ◆ Center for Japanese Language



— Introduction —  
of  
IPS

# Kitakyushu Science and Research Park (City of Kitakyushu)

Waseda University  
Student Dormitory

Waseda University  
Student Dormitory

Kyushu Institute of  
Technology

Waseda University  
Graduate School of Information,  
Production and Systems (IPS)

University of  
Kitakyushu

Shops & Restaurants

Waseda University  
Information, Production and  
Systems Research Center  
(IPSRC)



# STUDY OPTIONS IN IPS

## Graduate program

Engineering “Elites” from around the globe gathers in IPS and graduates with having professional skills in Information, Production and System field.

MASTER  
PROGRAM

DOCTOR  
PROGRAM

01

Spend 2 (two) years to  
obtain master degree  
of Waseda University

02

Spend 3 (three) years to  
obtain doctor degree  
of Waseda University



「I」 Field of **IPS**

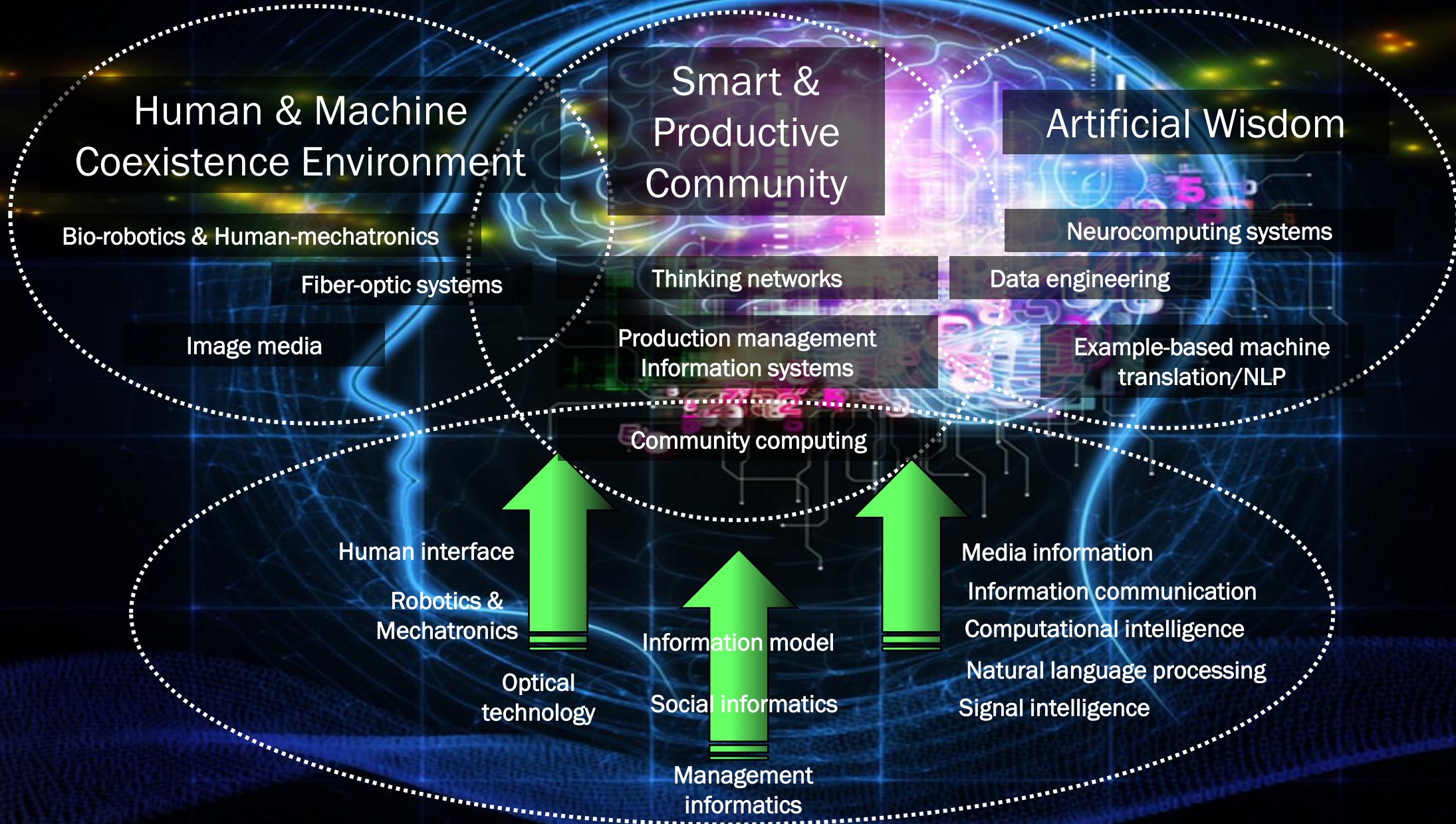
# Information Architecture

Designing the future with a variety of Information Technologies



# INFORMATION ARCHITECTURE

Designing new uses of information, from media to management engineering





**Prof. Fujimura**  
Smart Industry



**Prof. Furuzuki**  
Neurocomputing Systems



**Prof. Iwaihara**  
Data Engineering



**Prof. Kamata**  
Image Media



**Prof. Koyanagi**  
Thinking Networks



**Prof. Lepage**  
Example-based  
machine translation / NLP



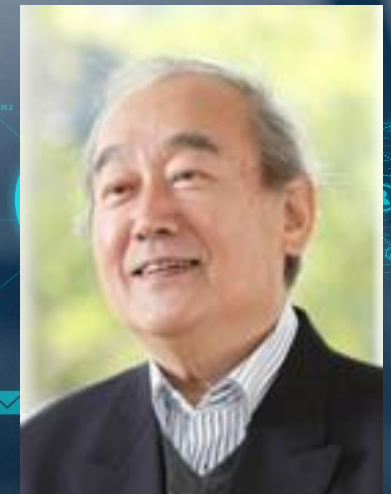
**Prof. Matsumaru**  
Bio-Robotics &  
Human-Mechatronics



**Prof. Tsubokawa**  
Fiber-optic systems



**Prof. Yoshie**  
Community Computing



**Prof. Tanaka**  
Interactive Programming

「P」 Field of **IPS**

# Production Systems

Putting IT to work in next generation production systems



# PRODUCTION SYSTEMS

Investigating production system for the 21<sup>st</sup> century with advanced theory and technology

Advanced Tribology

Power Transmission system

Life support devices

Sensing System

Nanomaterials, Nanocomposites

Electronics packaging materials

Stochastic control of traffic signals

Autonomous vehicle control

Pipe inspection robot

Melting furnace control

Finance engineering

Multi-objective optimization of production scheduling

Management engineering

Prediction and diagnosis of corrosion and deterioration

Health diagnosis of motor

Machine Design and Robotics

Sensor, Advanced materials, And Applied measurement

Intelligent and Process Control system

Management and Production Information System

Process monitoring and Equipment management

Semiconductor interconnection

Laser applications

Nanotechnology

Advanced mechanical system

Power transmission system

Noninvasive medical measurement

Binary power plant control

Power electronics

Solar cells, Biofuel cells

Decision support by goal-directed plan

Reactive scheduling for dependable production

Deterioration diagnosis of motor

Anomaly detection of plant and equipment

Signal processing for Equipment diagnosis



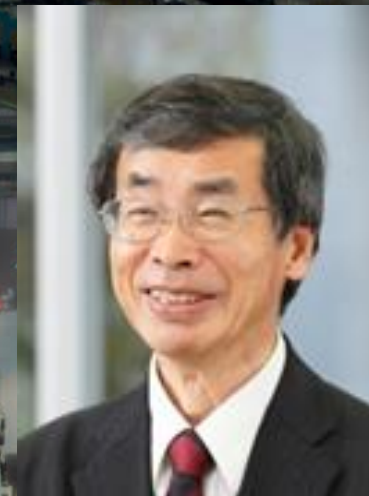
**Prof. Inujima**  
Machine Diagnosis Techniques



**Prof. Lee**  
System Control



**Prof. Murata**  
Manufacturing  
Information System



**Prof. Ogai**  
Process Control



**Prof. Tanaka**  
Mechanical System Design



**Prof. Tatsumi**  
Advanced Materials



**Assoc. Prof. Miyake**  
Current Bioelectronics



**Assoc. Prof. Tateno**  
Production Process



**Prof. Inuishi**  
Power Semiconductor Devices



**Prof. Shimizu**  
Biomedical Optics



# INTEGRATED SYSTEMS

The world's leading education and research  
for state-of-the-art LSI design and applications



Mobile System  
Image processing  
Multimedia  
Processor  
Security

DSP  
RF  
Memory  
Analog  
Mixed Analog and Digital  
Opto-electronic Integration

Simulation  
Optimization  
Verification & Test  
Electronics DA

Infrastructure  
Information and Communication  
Automobile  
Consumer Electronics



**Prof. Ikenaga**  
Image Information Systems



**Prof. Kimura**  
High-Level Verification  
Technologies



**Prof. Shinohara**  
Dependable Information  
Systems



**Prof. Watanabe**  
ASIC Design Automation



**Prof. Yamauchi**  
Advanced System LSI



**Prof. Yoshimasu**  
Wireless Communication  
Circuits Technologies



**Assoc. Prof. Ikehashi**  
Micro Electro-Mechanical  
Systems



**Assoc. Prof. Kakitsuka**  
Light Emitting Systems



**Assoc. Prof. Takahata**  
Opto-electronic Integrated  
System



**Prof. Ohsawa**  
Emerging Memory System

# LANGUAGE USED IN IPS

⚙️ LECTURES (Mostly English)

📍 RESEARCH (Either English / Japanese)

📄 THESIS (Either English / Japanese)

Will be conducted in either English or Japanese. Students with a good command of either English or Japanese will succeed not only in IPS but in Japanese companies.



—Application method—

— For 2020 —  
admission

# HOW TO APPLY IPS

Term of Admission : **September 2020**

Recommended application  
General application  
Work force application

Documentary Examination

Entrance Examination Method

Selection Procedure

Application Period

Results Announced

November 18 – November 29, 2019 [January Exam]  
January 6 – January 15, 2020 [February Exam]  
April 13 – May 7, 2020 [June Exam]

December 26, 2019 [January Exam]  
February 14, 2020 [February Exam]  
June 5, 2020 [June Exam]

03

04

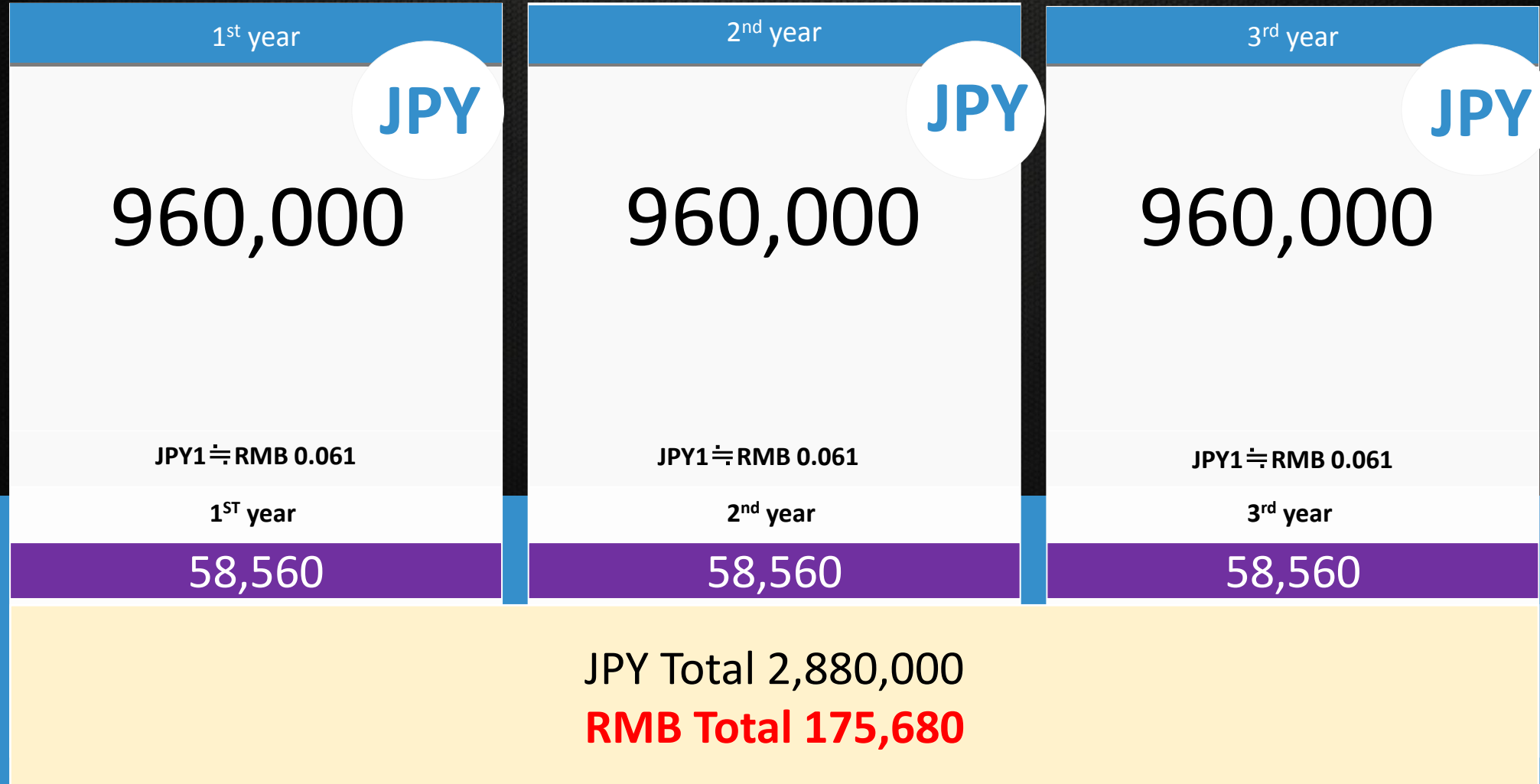
01

02

# TUITION FEE FOR MASTER'S PROGRAM

1 <sup>st</sup> year	2 <sup>nd</sup> year	Total
<b>JPY</b>	<b>JPY</b>	<b>JPY</b>
1,367,000	1,367,000	2,734,000
JPY1 ≙ RMB 0.061	JPY1 ≙ RMB 0.061	JPY1 ≙ RMB 0.061
1 <sup>ST</sup> year	2 <sup>nd</sup> year	<b>RMB Total</b>
83,387	83,387	<b>166,774</b>

# TUITION FEE FOR DOCTOR'S PROGRAM



## INQUIRIES

For more information, please visit our website.

- [http:// www.waseda.jp/ips/](http://www.waseda.jp/ips/)

email: [koho-ips@list.waseda.jp](mailto:koho-ips@list.waseda.jp)

Subscribe us  
on wechat

ID: [waseda-ips](#)

