



**UCI** Samueli  
School of Engineering

**Introduction**

# University of California



**Davis**



**Irvine**



**Los Angeles**



**Santa Barbara**



**Berkeley**



**Santa Cruz**



**Riverside**



**San Diego**



**San Francisco**



**Merced**



**Numerous High Tech  
Companies in California,  
Great Job Opportunities**

**Pleasant Mediterranean Climate**

**World Class Cultural  
and Entertainment  
Destinations**

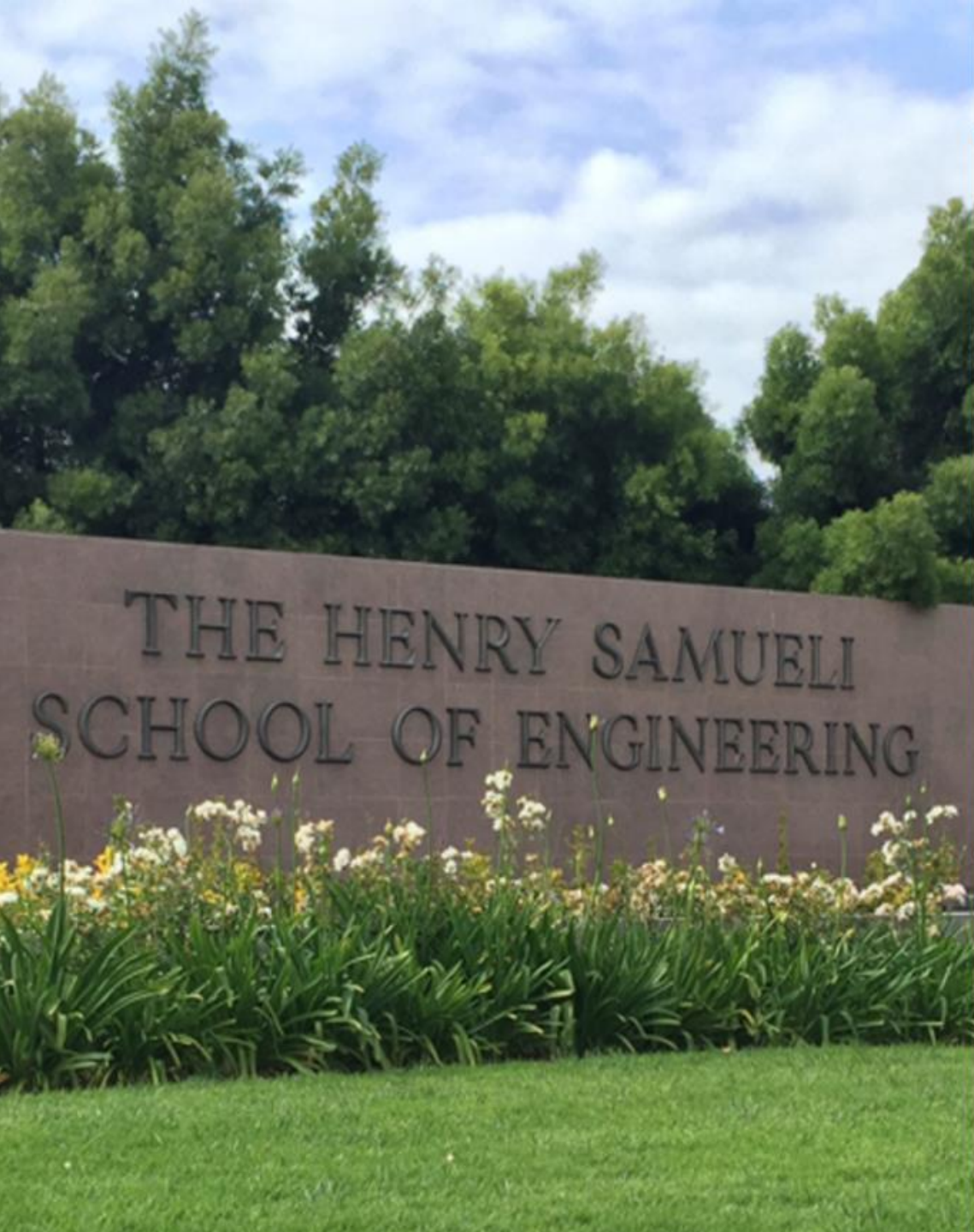
**Irvine is the Safest  
City of its size in the  
U.S. for 10 years**



**Irvine is located in Orange  
County, Which is the Largest  
Hub in the U.S. for Biomedical  
Devices Companies (over 400)**

**Southern  
California**





# Points of Pride



**Public  
University**  
in the U.S.

— *U.S. News & World Report*  
2021

U.S. NEWS & WORLD REPORT  
ENGINEERING PROGRAM RANKINGS

**21<sup>ST</sup>**

PUBLIC UNIVERSITY  
GRADUATE PROGRAM

**20<sup>TH</sup>**

PUBLIC UNIVERSITY  
UNDERGRADUATE PROGRAM

**#1 University**

doing the most for  
the American dream

**The New York Times**

2017 College Access Index

©2017 The New York Times Company. All rights reserved. Used under license.



**#1 Best College**

in the U.S.

**MONEY**

©2019 Meredith Corporation. All rights reserved. Used under license.  
MONEY and Meredith Corporation are not affiliated with, and do not endorse products or services of, University of California, Irvine.



**TOP 10**  
**“Cool School”**

by *Sierra* magazine for eight years

**31**  
**GRADUATE**  
programs ranked among  
**nation's top 50**

— *U.S. News & World Report*

## National Recognition

### ENERGY AND SUSTAINABILITY

Scott Samuelsen &  
Jack Brouwer

The  
New York  
Times



POPULAR  
MECHANICS

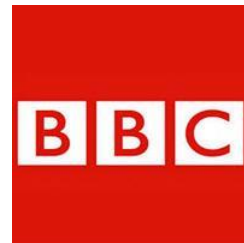
PBSO  
NEWS  
HOUR

NGT  
News  
Next-Gen Transportation

ORANGE COUNTY  
REGISTER

### HUMAN COMPUTER INTERFACE

Zoran Nenadic &  
Payam Heydari



TIME

EE|Times

ORANGE COUNTY  
BUSINESS JOURNAL



Buzz  
Feed

### CYBER SECURITY

Mohammad Al Faruque

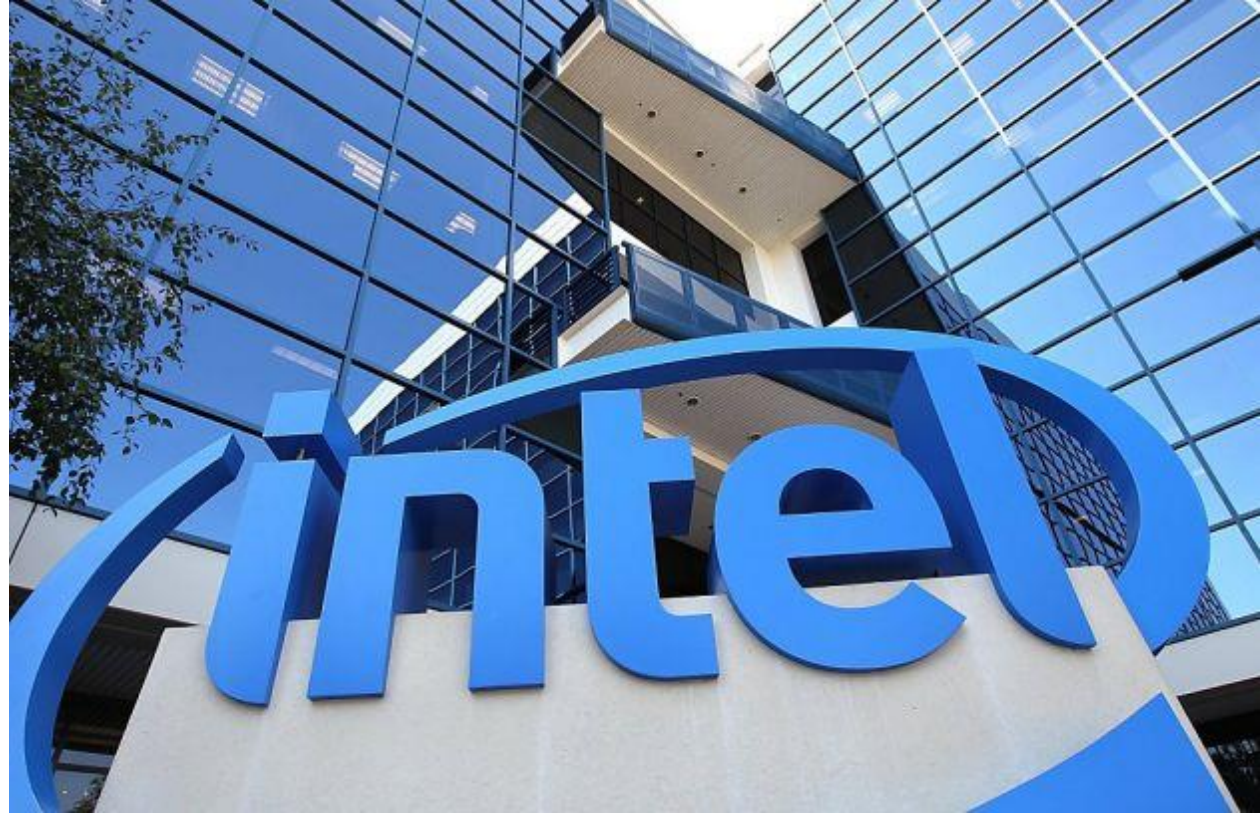
Newsweek

Los Angeles  
Times



gizmag Futurism

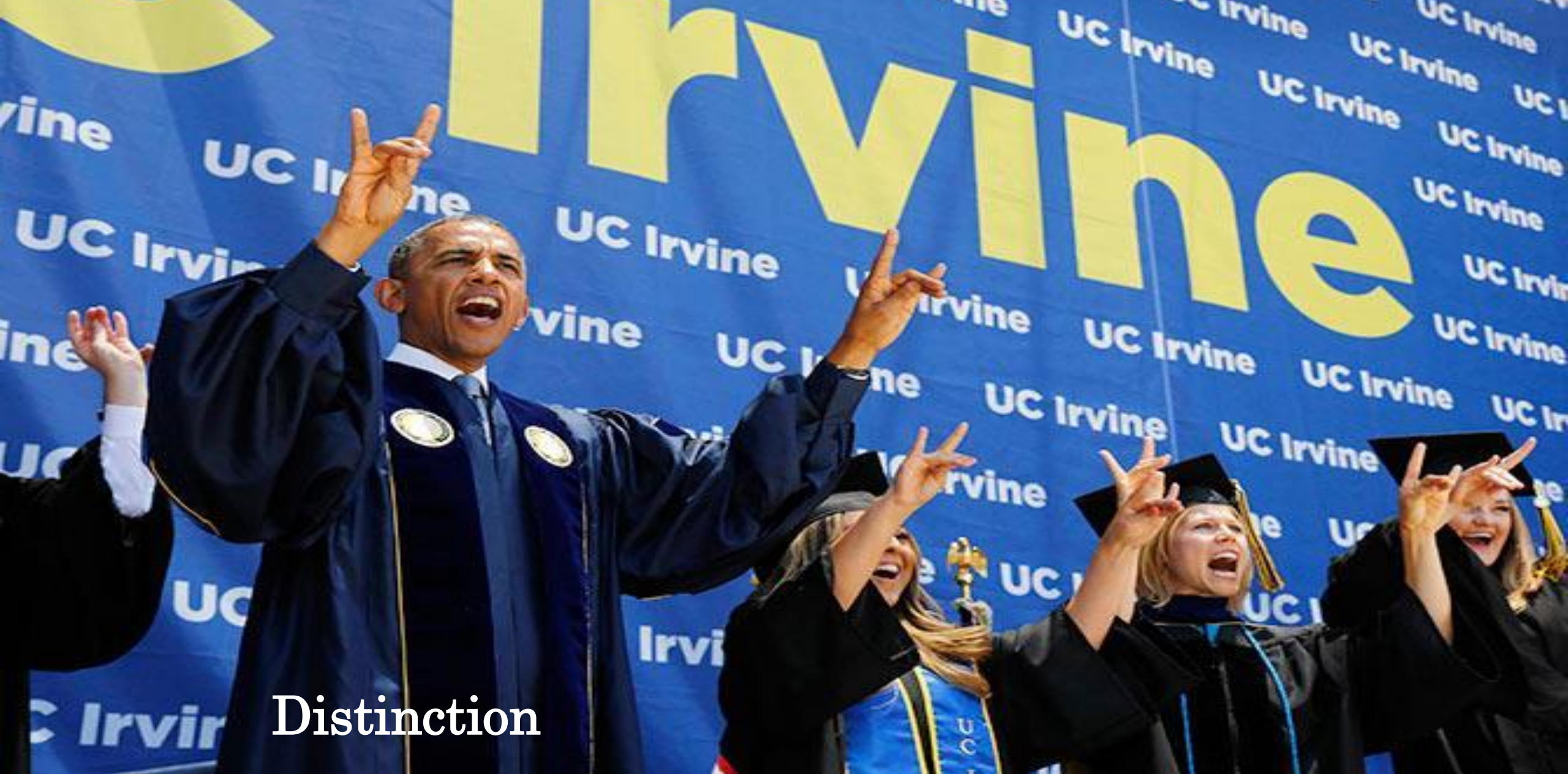
GIZMODO



***NORTHROP  
GRUMMAN***

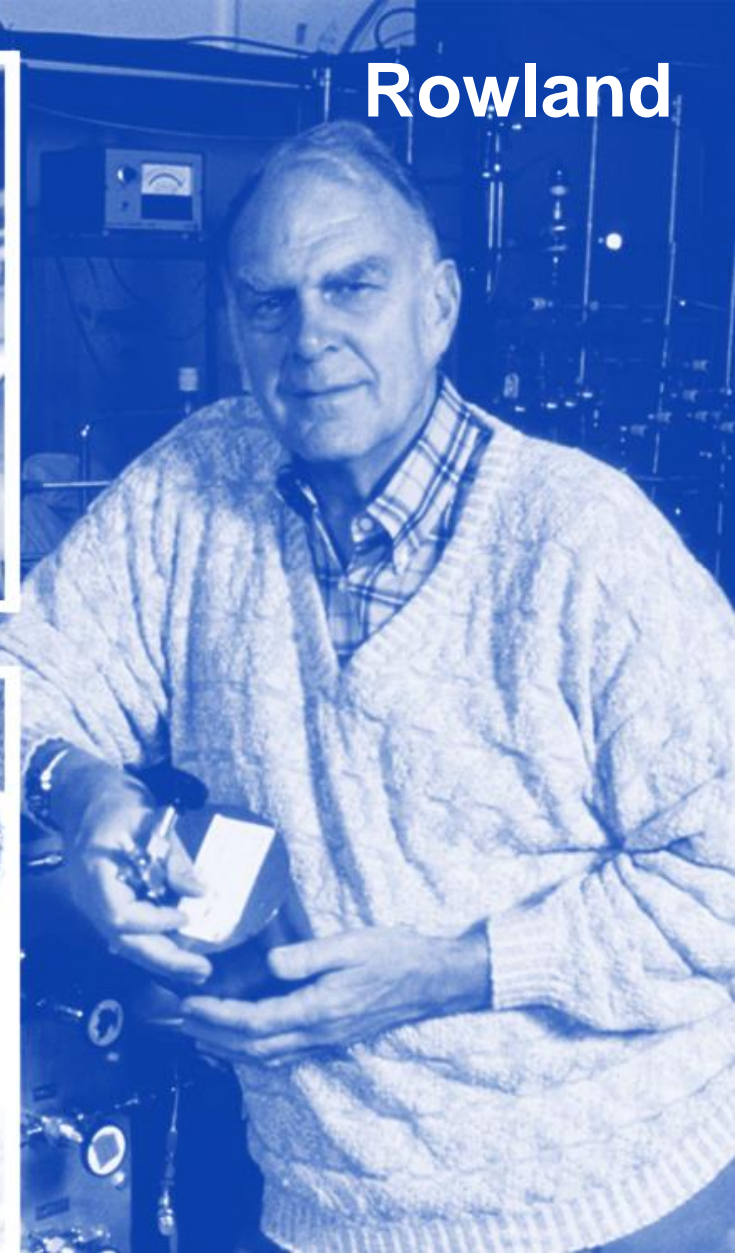
## Corporate Partners





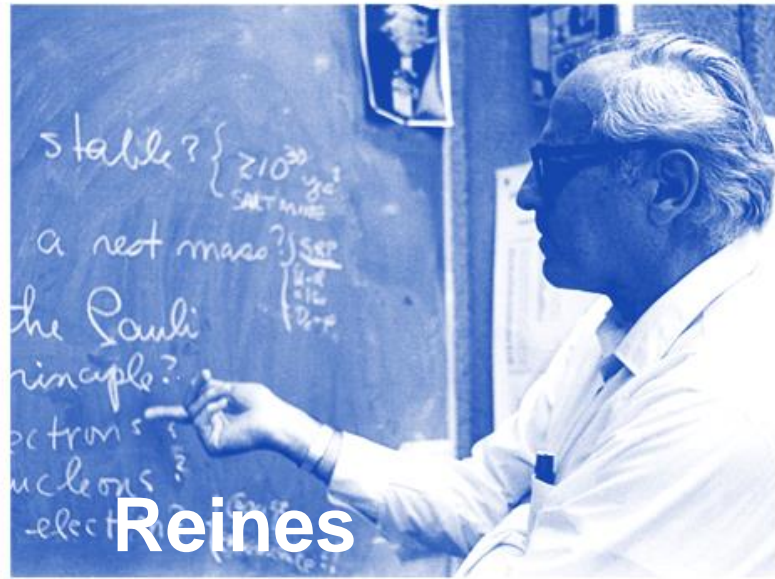
Distinction





3

Nobel Laureates





# Admissions

---

Average Incoming Students:

- SAT scores (math):  
664 (88<sup>th</sup> percentile)
- GRE scores (quantitative):  
162/170 (84<sup>th</sup> percentile)



**3695 Undergraduate**  
**926 Graduate**



**6 Departments**



**12 Engineering Programs**  
**(11 accredited)**

**Engineering  
Enrollment**



## Departments

- **Mechanical and Aerospace Engineering**
- **Civil and Environmental Engineering**
- **Electrical Engineering and Computer Science**
- **Chemical & Biomolecular Engineering**
- **Materials Science & Engineering**
- **Biomedical Engineering**

## Research Thrusts

- **Environmental Sustainability**
- **Human Health**
- **Materials and Manufacturing**
- **Mobility and Communications**

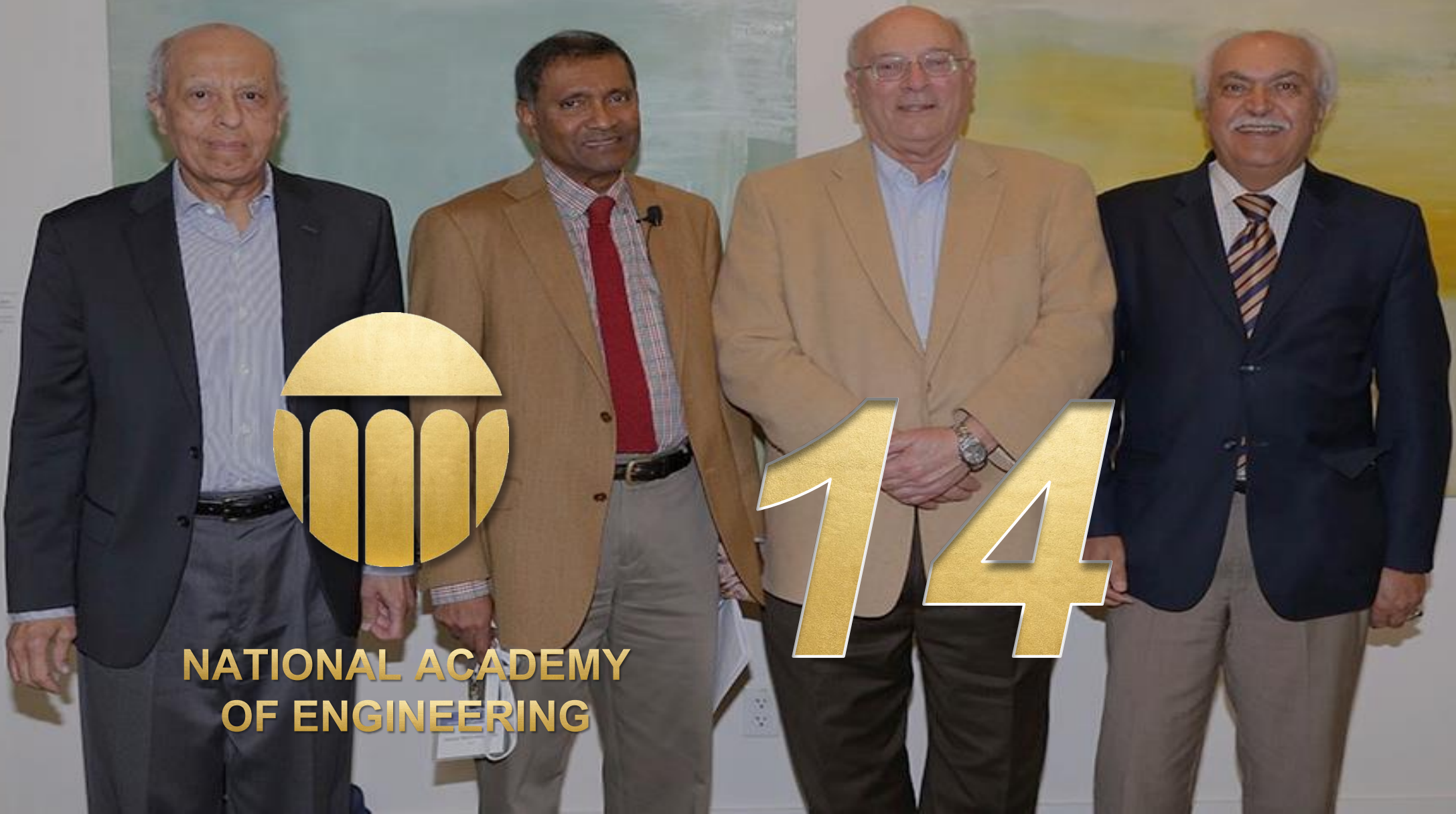


# FACULTY



151





**NATIONAL ACADEMY  
OF ENGINEERING**



**UCI Samueli**  
School of Engineering

# Major Research Centers

## Environmental Sustainability

- Advanced Power and Energy Program (APEP)
- Center for Hydrometeorology and Remote Sensing (CHRS)
- Water-Energy Nexus Center

## Human Health

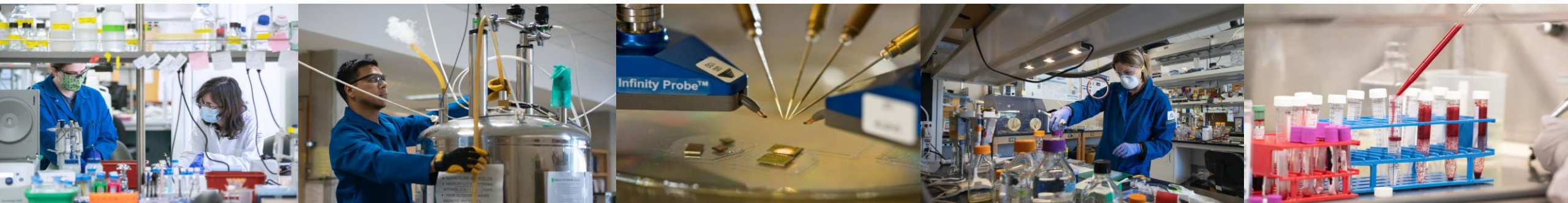
- Beckman Laser Institute (BLI)
- Center for Advanced Design and Manufacturing of Integrated Microfluidics
- Center for Complex Biological Systems (CCBS)
- Edwards Lifesciences Center
- Laboratory for Fluorescence Dynamics (LFD)

## Materials and Manufacturing

- Advanced Casting Research Center (ACRC)
- Center for Complex and Active Materials (CCAM)
- Integrated Nanosystems Research Facilities (INFR)
- Institute for Design and Manufacturing Innovation (IDMI)
- Irvine Materials Research Institute (IMRI)

## Mobility and Communications

- Calit2 (California Institute for Telecommunications and Information Technology)
- Center for Embedded Systems and Cyber-Physical Systems
- Center for Pervasive Communications and Computing



# EXPERIENTIAL LEARNING





100%

# UCI COVID-19 Prevention Measures and International Student Guidelines

UCI has been a community leader in its approach to public health and wellness during the pandemic. It developed leading-edge programs designed to maintain a healthy environment and help control the spread of coronavirus within the campus community.



All students, faculty and staff are required to **receive a coronavirus vaccine** or have an approved exception before coming to campus.



All individuals on campus will be **required to wear a mask** or face covering while indoors, regardless of vaccination status.



UCI invested in improved **heating, ventilation and air conditioning (HVAC) systems** to filter the air entering its buildings.



Completion of **daily symptom checks** are required for students and employees regardless of vaccination status.



The university developed rigorous **contact tracing, vaccine navigation and testing programs** to ensure that those carrying the virus receive proper care without spreading disease.



International students are required to be **fully vaccinated** before physically accessing the university's locations and programs.



# UCInspire Program

*10-Week Undergraduate Research Program*

---

# Key Benefits

- Experience cutting-edge research
- Differentiate your graduate application
- Opportunity to obtain a “Letter of Recommendation”
- 2-6 units of research credits (depending on format)
- Completion of a research project
- Publication opportunity
- Professional Development
- Increase your collaborative and technical communication skills
- Immerse yourself in the American culture



# Requirements

- **Engineering or Science Major**
- **TOEFL: 85+ or IELTS 6.5**
- **GPA requirement: 3.3 or higher (on 4.0 scale)**
- **Prior Research is a Plus**

# Estimated Cost



Application and F1 Visa Fee ..... \$750



Mandatory Campus Fee ..... \$284



Program Fee and Tuition ..... \$3566



Research Expense ..... \$2000



Health Insurance (10 weeks) ..... \$500



Housing Expense ..... \$2250

**TOTAL** ..... **\$9350**

**Note: Should the program be remote due to Covid-19, the program cost will be \$5200 USD**

# Timeline 2021

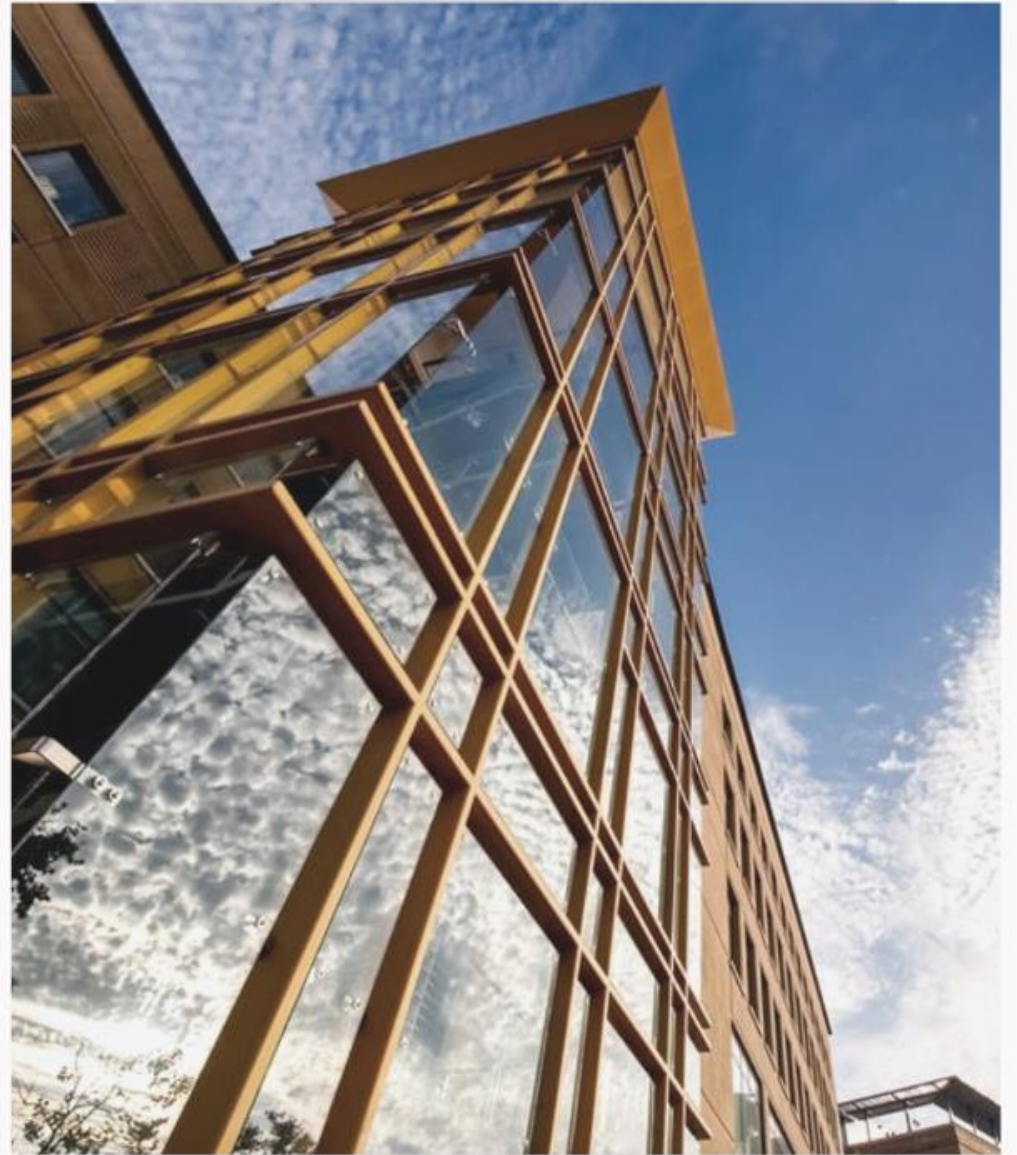
- **Application Open Date: November 1, 2021**
- **Application Deadline: January 15, 2022**
- **Online Interview: January 16 – February 22, 2022**
- **Project Matching and Acceptance Letter:  
February 26 – March 22, 2022**
- **Start Applying for Visa: March 22, 2022**



# Application

---

- **Online Application**
- **One-page Personal Statement**
- **CV/Resume**
- **Official Transcript**
- **Your Top Five (5) Faculty Choices**
  - **If no faculty matches your interest, please indicate your preferred professor whose research area best aligns with your interest**
- **Two References Contact Info**



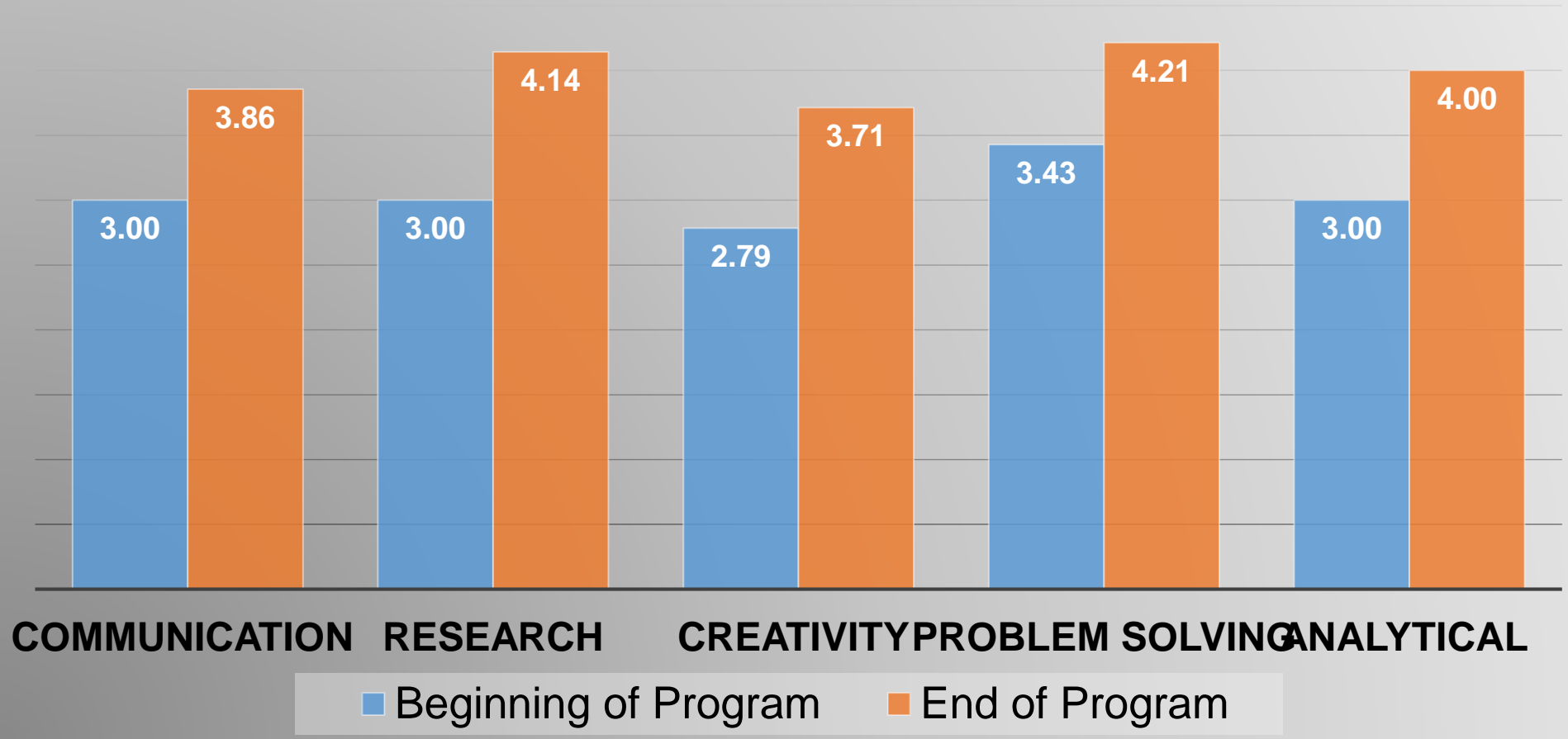


# FEEDBACK FROM STUDENTS



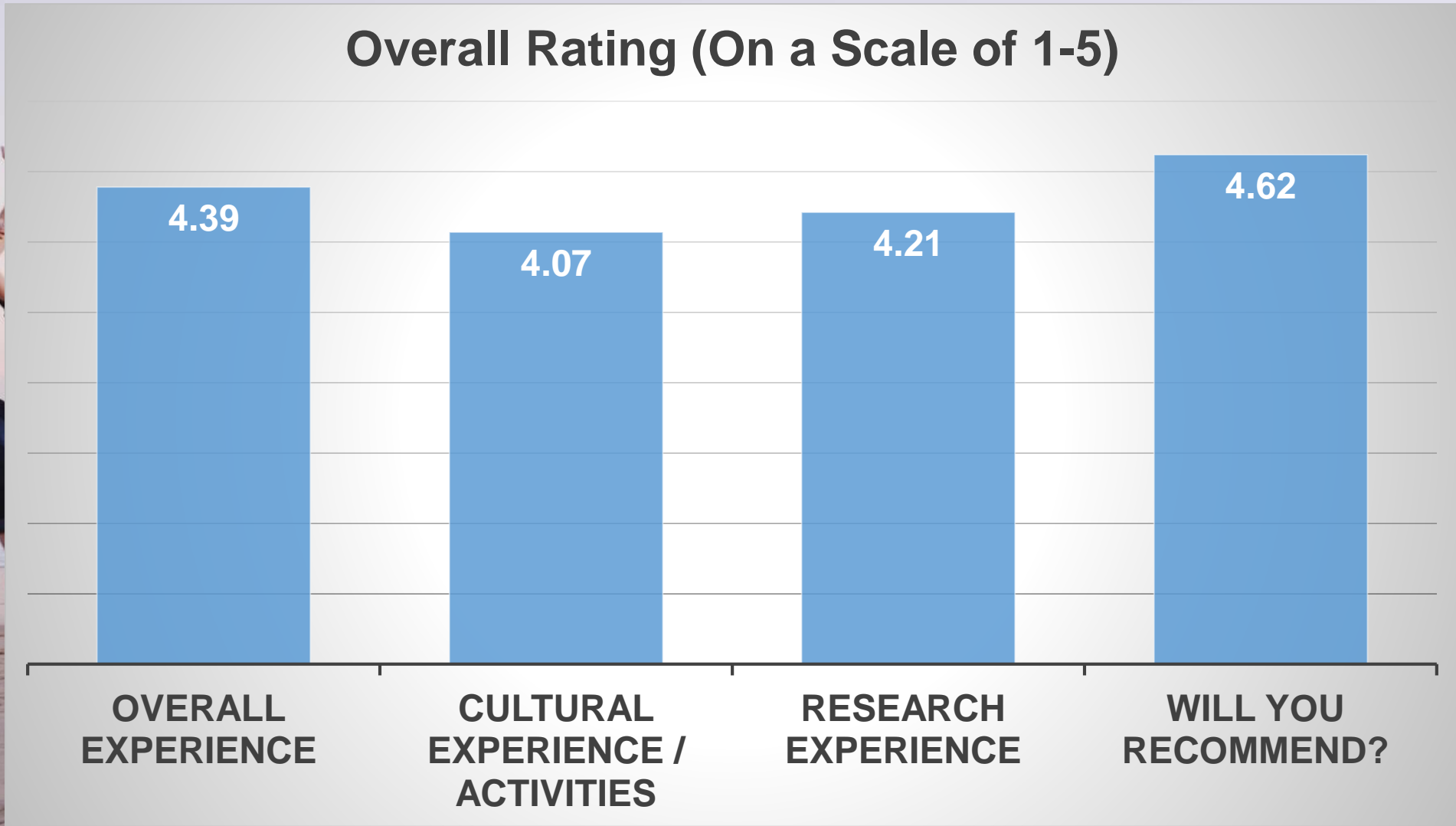
# Feedback from Students

## Necessary Skills for Graduate School (Scale from 1 to 5)



# Feedback from Students

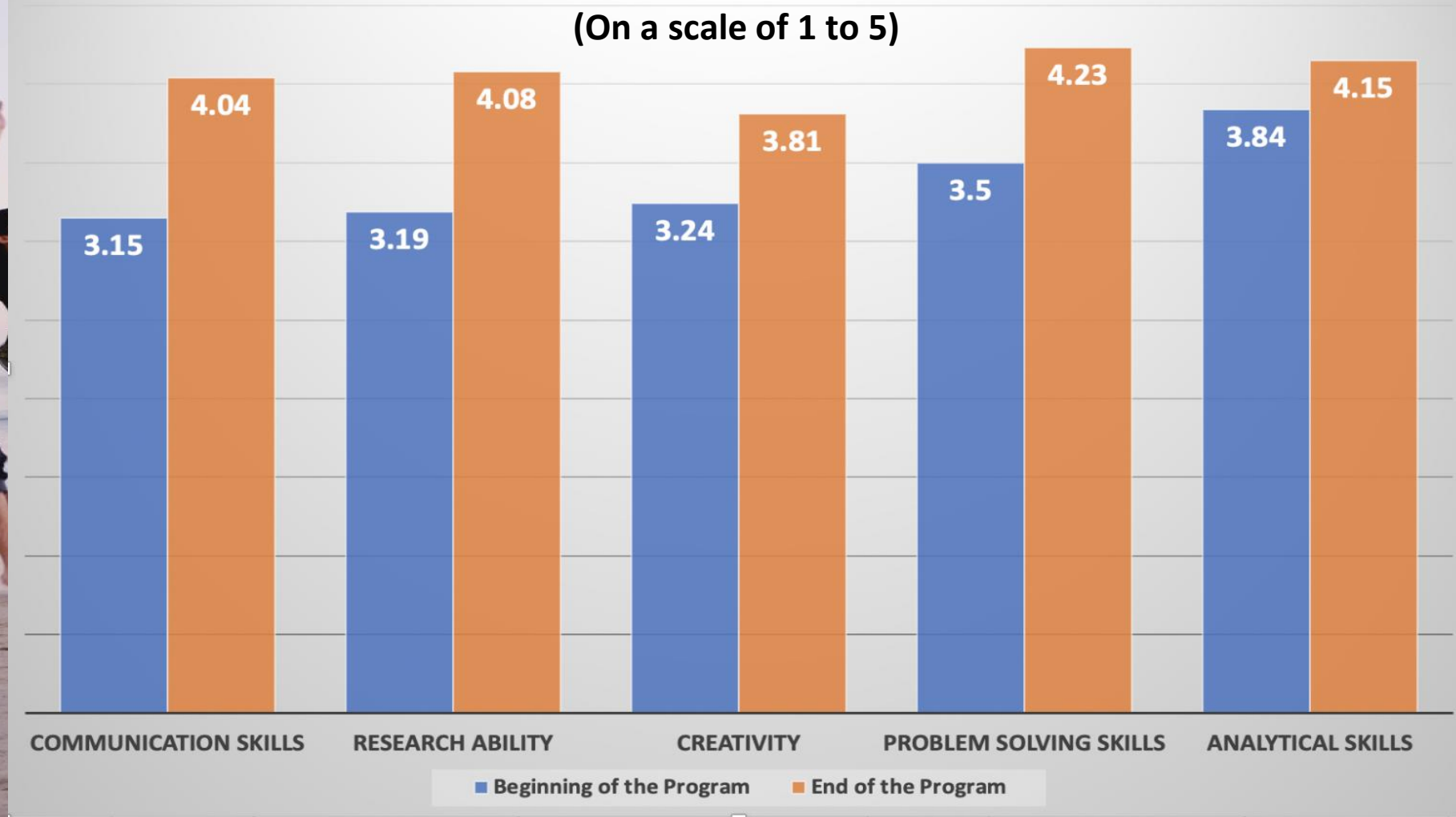
Overall Rating (On a Scale of 1-5)



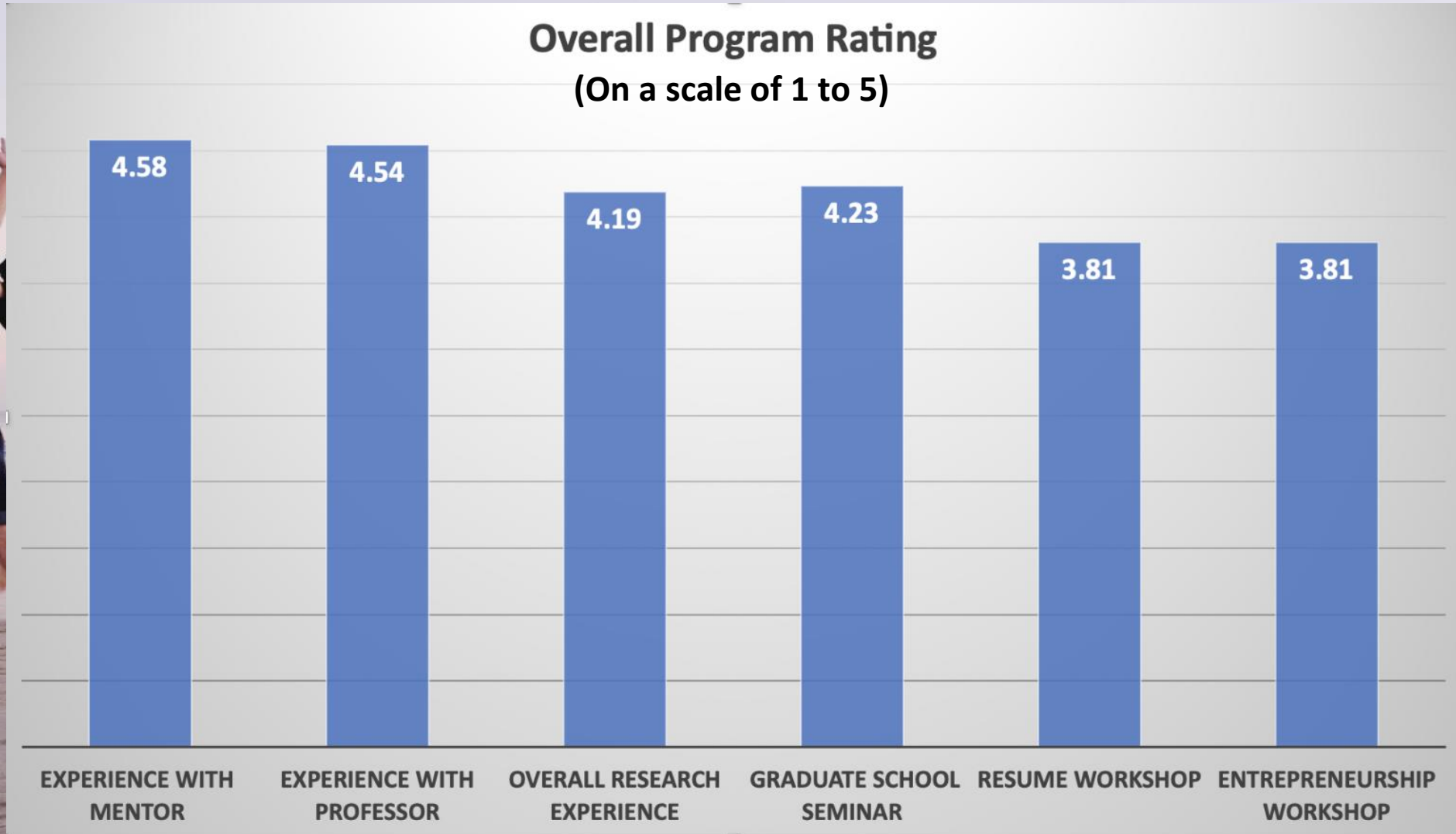
# Survey Results from Remote Research Format

## UCInspire Beginning Vs. End Skills Comparison

(On a scale of 1 to 5)



# Survey Results from Remote Research Format



A large, ancient tree with thick, gnarled roots and branches, set in a sunlit park with other trees and buildings in the background. The tree's trunk is massive and textured, with roots spreading out across the ground. The background shows a lush green lawn, other trees, and a building under a bright sky.

**Where are they now?  
2016-2020 UCInspire Students**

PhD, Boston University

PhD in ECE Department, Arizona State University

DPhil in Inorganic Chemistry, **Oxford University**

Masters or PhD, University of California, Irvine

Masters in Mechanical Engineering, UCLA

Masters in Philosophy, The Hong Kong Polytechnic University

PhD, National University of Singapore

Masters Program in ECE, at **Duke University**

Master of Science in Electrical Engineering, **University of Pennsylvania**

Masters Program in ECE, at University of Texas at Austin

PhD in Engineering Science, **Dartmouth**

PhD, University of Maryland

PhD, UCLA

Masters of Science, **John Hopkins** Bloomberg School of Public Health

PhD, Boston University

Masters, Language Technologies Institute, **Carnegie Mellon**

PhD, University of Hong Kong

PhD, National University of Singapore

PhD in Computer Science, Penn State

PhD in Fluid Mechanics, **John Hopkins** University

University of Illinois, Urbana-Champaign

Masters in TBSI, Tsinghua University

Masters of Computer Science, Washington University

PhD, University of California, San Diego

Masters of Engineering, **Cornell University**

Masters, University of Southern California

PhD in Mechanobiology, National University of Singapore

PhD, **Carnegie Mellon** University

William and Mary, Ivy League

Masters, **Carnegie Mellon**

MS, Department of Computer Science, **Northwestern University**

MS, Mechanical Engineering, University of Michigan, Ann Arbor

PhD, UT Austin

MS, **Carnegie Mellon University**

MS, Computer Science Department, **Johns Hopkins University**

Duke University Biomedical Engineering

IMSE doctorate program at Washington University in St.Louis

PhD, Computer Science, Purdue University

Ph.D., MSE, **Northwestern University**

MS, CE, Georgia Institute of Technology)

PhD, Material Science and Engineering, UIUC

MS, CS of Dartmouth

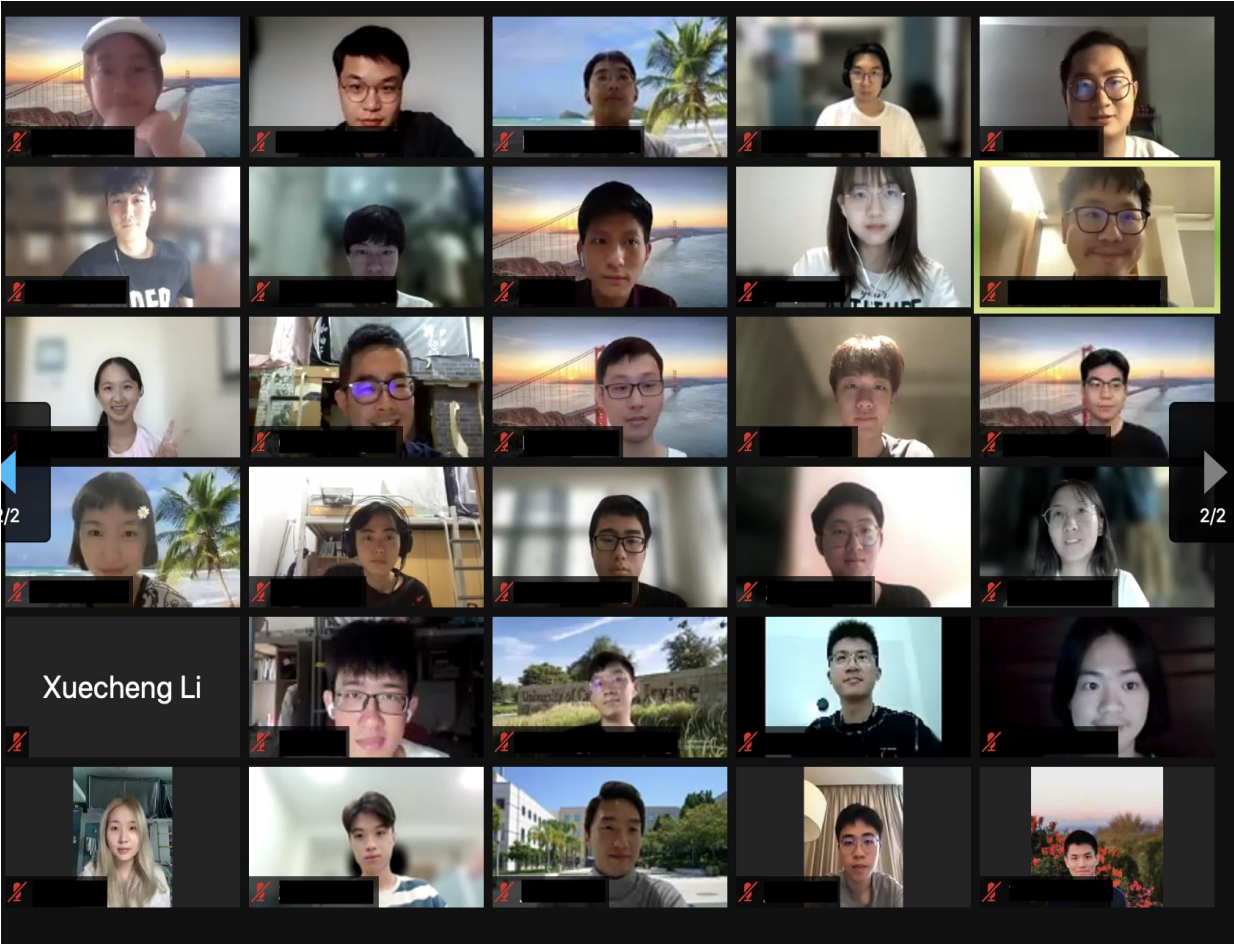
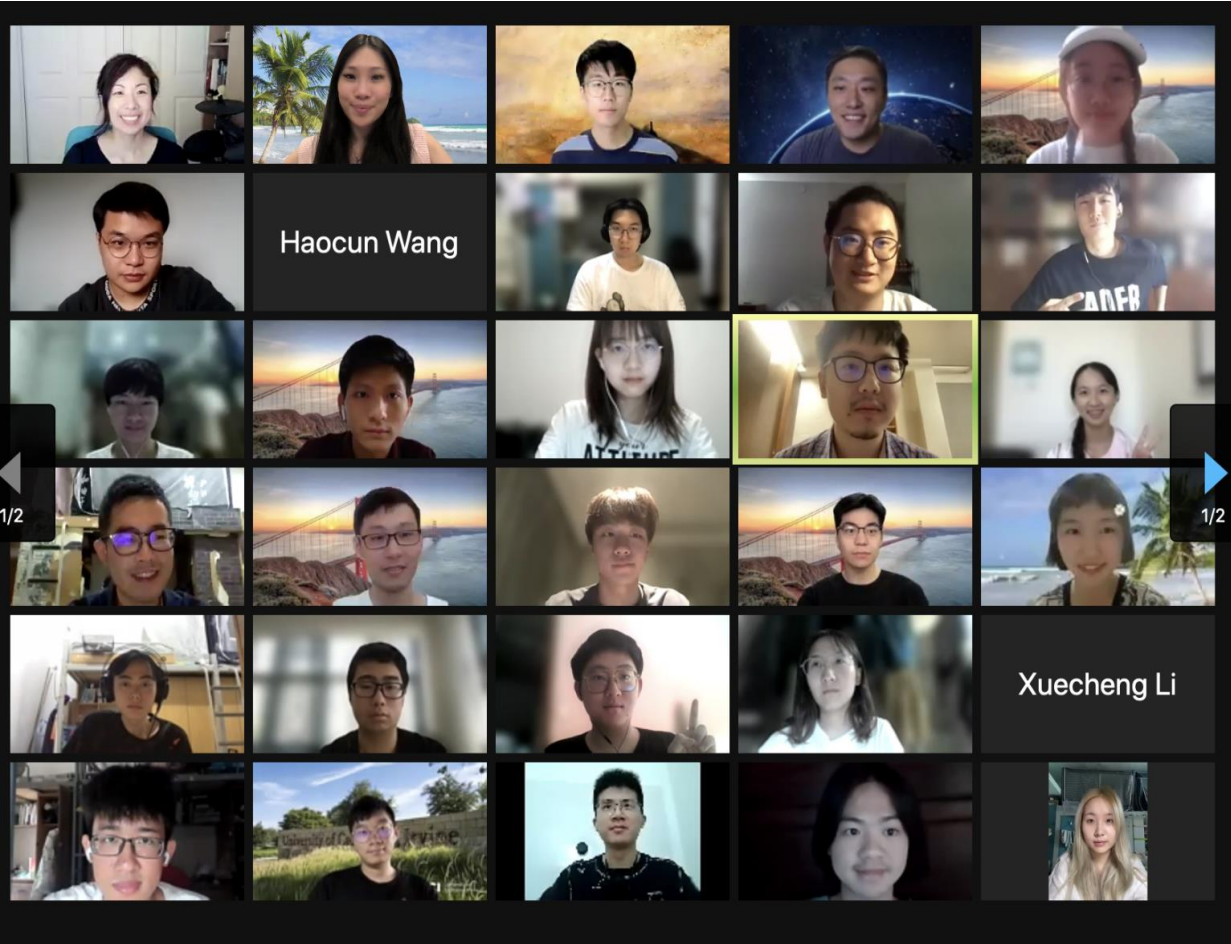
# UCInspire Student Testimonies

# UCInspire

Henry Samueli School of Engineering  
University of California, Irvine



# 2021 UCInspire Closing Ceremony





# 2022 UCInspire Spring

- March 1st – June 11th, 2022 (15 weeks)
- Remote Learning Format
- 2 transferable academic units
- 3<sup>rd</sup> and 4<sup>th</sup> year students preferred
- Able to work 15 hours per week (minimal)
- Send your resume/CV, personal statement, transcript, English test score, your top three faculty choices to [ucinspire@uci.edu](mailto:ucinspire@uci.edu), **before 1/30/2022**.
- Please do **NOT** apply through the UCInspire website

*The total cost **\$5200** includes program administration and activities, transferable academic course credit fee and research fee.*





# Participating Faculty Members

Joyce Keyak

William Tang

Amir  
AghaKouchak

Lizhi Sun

Mohammad Al  
Faruque

Quoc-Viet  
Dang

Fadi J.  
Kurdahi

Zhou Li

Keyue  
Smedley

Xiaoqing Pan

Lawrence  
Kulinsky

Joshua Garcia

Ian Harris

Marco  
Levorato

Chen Li

Xiaohui Xie

<https://sites.uci.edu/ucinspire/research-faculty/>



# **3+2 Engineering Program**

**BACHELOR'S DEGREE FROM HOME INSTITUTION,  
MASTER'S DEGREE FROM UCI**



# Majors

- Electrical Engineering
- Computer Engineering
- Mechanical Engineering
- Biomedical Engineering
- Civil Engineering
- Transportation Engineering

## **M.S. Options:**

- Corresponding Majors (Courses or Thesis), BME (Thesis Only)
- Network Systems

## **Professional Master Degree:**

- Master of Engineering
- MECPS (Internet of Things, Master of Engineering)

# Key Benefits

- **2 Degrees in 5 years (B.S. and M.S.)**
- **Working with world-class faculty**
- **Improve English Proficiency**
- **Customized courses for GRE preparation**
- **Experience American culture and international education**
- **Differentiating yourself with cutting-edge research in the U.S.**

# 3+2 Program is a pre-approved program of study

SUMMER

1

FALL

2

WINTER

3

SPRING

4

- 4-Week ESL (Optional)
- Scientific Writing Course
- GRE Preparation

- UCI Engineering Courses
- Grad School Preparation Seminar

- UCI Engineering Courses

- UCI Engineering Courses

- Create a List of Graduate Programs
- Begin Writing Statement of Purpose

- Finish writing Statement of Purpose
- Submit Graduate Program Applications

- Receive Graduate Admissions Decisions

# Graduate Level Courses Policy

- **You can take up to 3 graduate level classes toward your M.S. degree**
- **Double counting is not allowed (a graduate level class can only count toward either a M.S. degree or a B.S. Degree)**
- **If you are applying to a professional Master's program, please check with the individual program for specific requirements.**





# Requirements

- **Must be an Engineering Major**
- **Complete at least three full academic years at home university**
- **TOEFL: 85+ or IELTS 7**
- **GPA requirement: 3.3 or higher (on 4.0 scale)**

## Expenses (Prices subject to change)

### Tuition and Required Program Fees for the 2021 10-month 3+2 Academic Study Abroad Program September 1, 2021 – June 15, 2022

#### Included in the Price

|   |                 |
|---|-----------------|
| Application Fee, non-refundable   | \$200           |
| Course Tuition & all academic and service components  | \$31,050        |
| Student Services Fee (includes UCI photo ID, UCI Net ID (email and internet service on campus), one copy of official transcripts) | \$750           |
| <b>Total</b>  | <b>\$32,000</b> |

Health Insurance:  $\$585/\text{quarter} \times 3 = \$1,755/\text{year}$ . Students must provide proof of sufficient insurance and submit the insurance waiver if they do not purchase the plan through UCI DCE.

We do not offer on-campus housing. UCI only guarantees housing for freshmen and Ph.D. students. However, there are off-campus apartments available to offer a convenient living environment as well as the opportunity to meet, study, and interact with full-time UC Irvine students and other students visiting from around the world. We can also recommend housing vendors if needed.

**Approximate Total Cost including health insurance and living expenses: \$51,725**

**\*\*Prices subject to change depending on the research format\*\***

# IMPORTANT DATES



\*Individual program application deadline may vary. Please refer to UCI Graduate Division's website for the finalized date.

# Statistics 2022

## 139 Participating Students:

- 8 students in Ph.D. program at UCI
- 90 students graduated or in M.S. program at UCI
- 38 students went to other graduate programs in U.S.  
(UC Berkeley, Cornell, Carnegie Mellon, etc.)
- 2 returned to China after Year 1
- Only 1 was not admitted due to low GPA at UCI



Explore Sunny  
Orange County!





## Dining

Orange County has the best Chinese food in the United States

# *Unexpected Romance*



0110G463544



0110G463544

... this ...  
... night ...  
... rg, ...



# UCInspire: 10-Week Undergraduate Research Program

INTERNATIONAL STUDENT PROGRAM IMMERSIVE RESEARCH EXPERIENCE

- [Home](#)
- [About](#)
- [Research Projects](#)
- [Program Activities](#)
- [Student Life](#)
- [Requirements and Important Dates](#)
- [Application](#)
- [Contact Us](#)

## Home



**The University of California, Irvine** (UCI, UC Irvine, or Irvine) is a public research university located in Irvine, California and one of the 10 general campuses in the University of California (UC) system. UCI's Orange County campus is the fifth-largest in the UC system, with over 28,000 students, 1,100 faculty members and 9,000 staff. Click [here](#) for another video.

### LANGUAGES

- 中文



### UCI ENGINEERING NEWS

- [Where supply meets demand](#)

October 28, 2019

UCI STEM Career Fair serves both students and employers
- [Biomedical engineer Chang Liu named one of only five Moore Inventor Fellows nationwide](#)

October 15, 2019
- [UCI scientists reveal mechanism of electron charge exchange in molecules](#)

October 14, 2019



**STAY CONNECTED**  
sites.uci.edu/ucinspire



# The UC Irvine 3+2 Engineering Program

Bachelor's Degree from Home Institution, Master's Degree from UCI

UCI University of California, Irvine



UCI Samueli School of Engineering University of California, Irvine

- Home
- About ▾
- Program Details ▾
- Current Students ▾
- Contact Us
- FAQ
- 中文



Click [here](#) to watch our promo video.

The UC Irvine 3+2 Engineering Program, organized by The Samueli School of Engineering (HSSoE), The UC Irvine 3+2 Engineering Program is a two-year academic program that allows students to obtain both a B.S. degree from their home

## UCI Engineering News

[Where supply meets demand](#) October 28, 2019

[UCI STEM Career Fair serves both students and employers](#)

[Biomedical engineer Chang Liu named one of only five Moore Inventor Fellows nationwide](#) October 15, 2019

[UCI scientists reveal mechanism of electron charge exchange in molecules](#) October 14, 2019

[Breakthrough has applications in data storage, energy conversion, quantum computing](#)



**STAY CONNECTED**  
[sites.uci.edu/engr32](https://sites.uci.edu/engr32)



UCIrvineEngineering

加州大学欧文分校工学院官方公众号

3 original creations 44 friends following

[View](#)

[Unfollow](#)

学院概况

招生信息

精彩内容

Thursday 9:58 PM



### 【院系介绍】UCI材料科学与工程系

带你走进 UCI Samueli 工学院的材料科学与工程系，每次推送介绍一个工学院院系，希望大家多多关注。



# WECHAT

@UCIrvineEngineering

< 返回



UCIrvineEngineering

关注 124 | 粉丝 480

加州大学欧文分校工学院官方微博 Samueli School of Engineerin...

主页 微博 相册



UCIrvineEngineering

10-24 来自 Weibo.intl

UCI从美国疾病控制与预防中心（CDC）和有毒物质与疾病管理局（ATSDR）获得100万美元的资金，用于研究全氟和多氟烷基物质（PFAS）污染的饮用水与健康之间的关系。

[网页链接](#)



微博内打开



# WEIBO

@UCIrvineEngineering



## **Dr. Lily Wu**

**Director of Academic Innovation,  
Programs**

Samueli School of Engineering  
1080 Anteater Instruction and  
Research Building,

University of California, Irvine  
Irvine, CA 92697-2700

Phone: (949) 824-4613

Email: [ucinspire@uci.edu](mailto:ucinspire@uci.edu)

Email: [engineering-3plus2@uci.edu](mailto:engineering-3plus2@uci.edu)



## **Kristin Roher**

**Program Manager,  
Academic Innovation**  
Samueli School of Engineering

1080 Anteater Instruction and  
Research Building,

University of California, Irvine  
Irvine, CA 92697-2700

Email: [ucinspire@uci.edu](mailto:ucinspire@uci.edu)

Email: [engineering-3plus2@uci.edu](mailto:engineering-3plus2@uci.edu)



## **Olivia Chang**

**Program Coordinator,  
Academic Innovation**  
Samueli School of Engineering

1080 Anteater Instruction and  
Research Building,

University of California, Irvine  
Irvine, CA 92697-2700

Email: [ucinspire@uci.edu](mailto:ucinspire@uci.edu)

Email: [engineering-3plus2@uci.edu](mailto:engineering-3plus2@uci.edu)