

**Dual Bachelor's Master's Degree Program
Study Abroad & Exchange
Intensive English Language Special Programs**



TEMPLE
UNIVERSITY

TEMPLE UNIVERSITY

- **Public, top-tier** research institution
- **40,000** total students
- **3,000** international students
- **Founded in 1884**



TEMPLE FACTS

14:1

Student-Faculty ratio

3 million+

Books in Paley Library

700

Computers in the Tech Center

350+

Student organizations on-campus

88%

Percentage of smart classrooms

3,200 sq. meters

Size of Liacouras Center

572

academic degree programs



RANKINGS & RESEARCH

1st

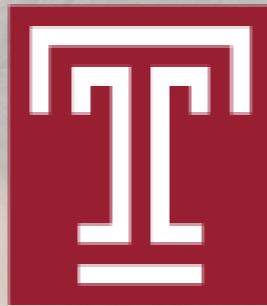
Internationally to
Successfully Remove HIV
from Cultured Human Cells

Top 4%

4-Year Universities, Carnegie R1
Highest Research Activity

7

Faculty among Top 1%
Most Cited in their Fields
Nature



**Top University for
International
Students**

US News & World Report

#46

Top Public Universities
US News & World Report

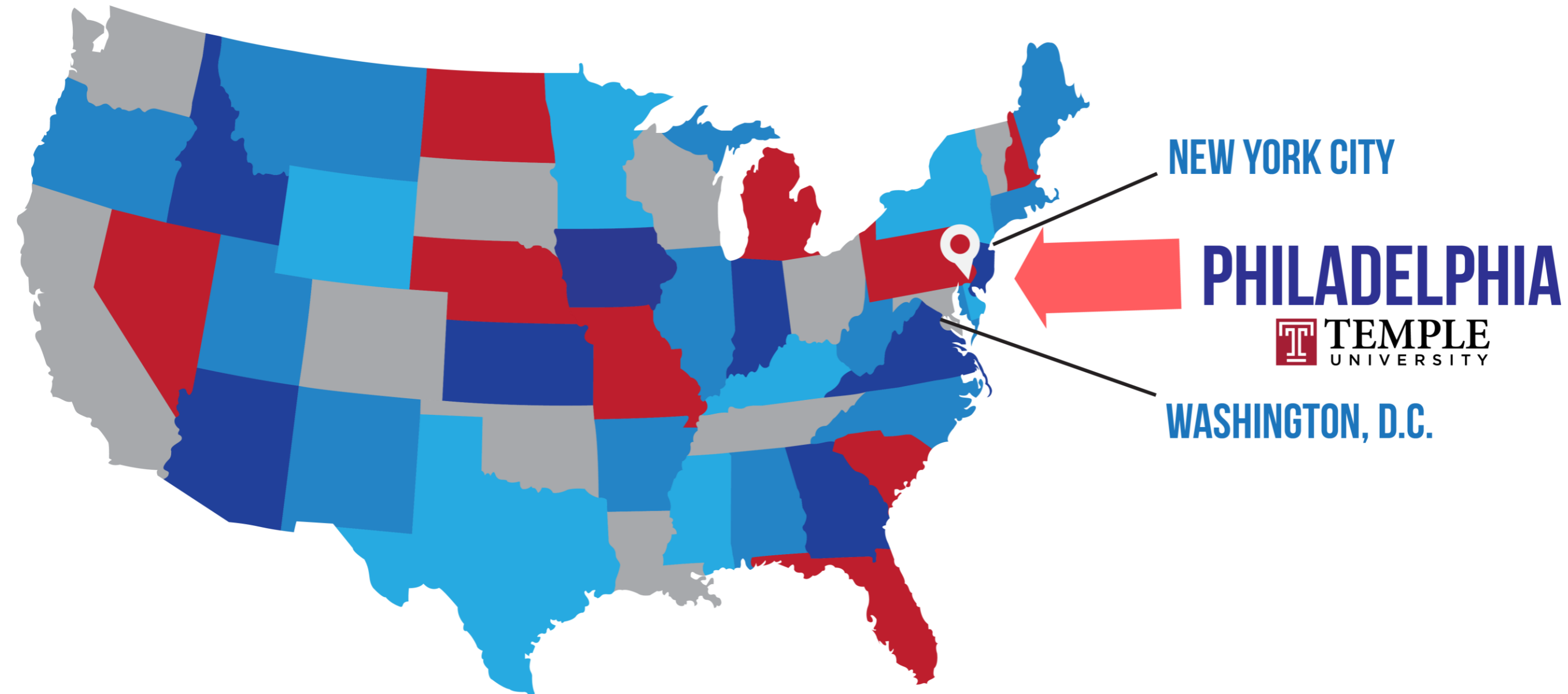
Top 100

Research Expenditures (\$242M)
National Science Foundation

#15

Google Scholar Citations Worldwide
Webometrics

OUR LOCATION



* Temple's Main Campus is 2.5km from Center City Philadelphia

PHILADELPHIA

- On the East Coast
- Diverse culture, arts, cuisine, and history
- Birthplace of America



PHILADELPHIA

#1

City for Young Adults, Forbes

2nd

Largest City on the East

Affordable Cost of Living (Sperling's Best Places)

- 80.9% less expensive than New York City
- 59.3% less expensive than Washington D.C.



OVERSEAS CAMPUSES



TEMPLE IN PHILADELPHIA



STUDY AT TEMPLE

Study Abroad and Exchange

Intensive English Language Programs

- American Culture at Temple
- Graduate Academic English
- Super Intensive Program

Dual Bachelor's Master's Degree Program

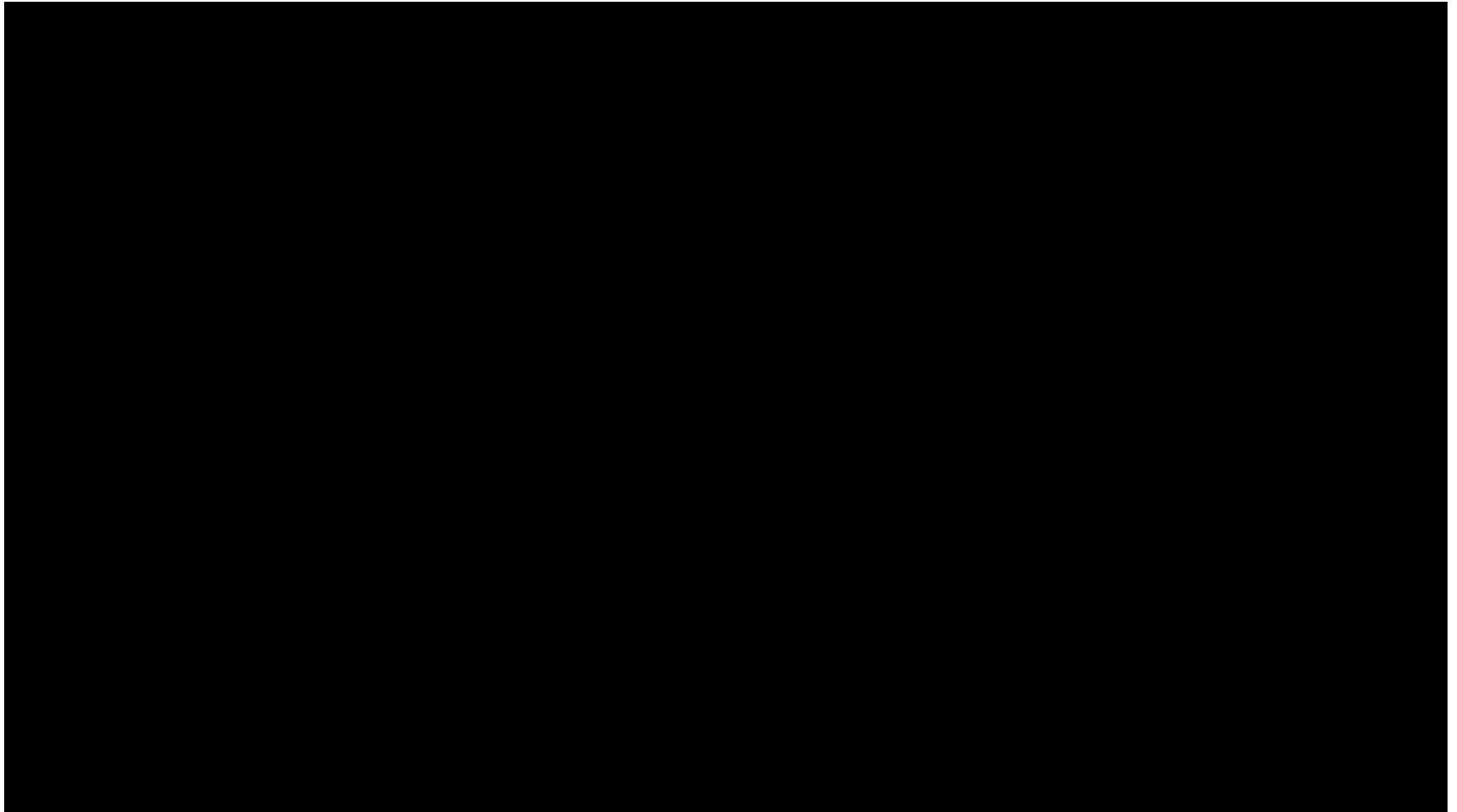


STUDY ABROAD & EXCHANGE

- Allows students to study at Temple for one year or one semester
- Study abroad students pay tuition to Temple University
- Exchange students pay tuition to their home university




EXPERIENCE STUDYING ABROAD



STUDY ABROAD BENEFITS

- **Support from program officers**
- **Assigned to academic advisor**
- **Assistance finding housing**
- **Airport pickups**
- **Shopping runs**
- **Welcome activities**

GLOBAL LIVING LEARNING COMMUNITY

A group of diverse young adults, including men and women of various ethnicities, are smiling and posing for a selfie. One man in the foreground is holding a smartphone high above his head. They are outdoors in a city setting with a clear blue sky and some buildings in the background. The overall mood is positive and social.

The Global Living Learning Community provides domestic and international students an opportunity to build life-long relationships by living together and collaborating on projects to promote globalism on and off campus.

INTENSIVE ENGLISH LANGUAGE PROGRAM

American Culture at Temple (ACT) Program

About ACT

- Improve your reading, writing, listening and speaking.

Language & Culture Track

- Explore the city and beyond in this action-packed program that will improve your language and knowledge of US culture.

Business Language & Culture Track

- Develop professional presentation, writing, etiquette and more. Visit local businesses and explore cultural sites.

Dates

- Summer: July 7-August 3, 2019

Activities

- Trip to Washington, DC (Winter)
- Trip to New York City
- Trip to Ocean City (Summer) & much more!!

Costs

- \$3,950
- Costs include tuition and fees, accommodation, materials, select meals, ground transportation, and all activity fees.

Housing

- Live in a shared on-campus dormitory

Questions?

- Contact ielp.special.temple.edu
- WeChat微信: TempleIELP

INTENSIVE ENGLISH LANGUAGE PROGRAM

American Culture at Temple (ACT) Program

About ACT

- Improve your reading, writing, listening and speaking.

Language & Culture Track

- Explore the city and beyond in this action-packed program that will improve your language and knowledge of US culture.

Business Language & Culture Track

- Develop professional presentation, writing, etiquette and more. Visit local businesses and explore cultural sites.

Dates

- Summer: July 7-August 3, 2019

Activities

- Trip to Washington, DC (Winter)
- Trip to New York City
- Trip to Ocean City (Summer) & much more!!

Costs

- \$3,950
- Costs include tuition and fees, accommodation, materials, select meals, ground transportation, and all activity fees.

Housing

- Live in a shared on-campus dormitory

Questions?

- Contact ielp.special.temple.edu
- WeChat微信: TempleIELP



INTENSIVE ENGLISH LANGUAGE PROGRAM

American Culture at Temple (ACT) Program

MONDAY	TUESDAY	WEDNESDAY	THURSDAY	FRIDAY	SATURDAY	SUNDAY
9:00-12:00 Language and Culture	9:00-12:00 Integrated English Skills	9:00-12:00 Language and Culture	9:00-12:00 Integrated English Skills	9:00-12:00 Language and Culture	Trips: Ocean City (beach town) New York City	Free Day 
Lunch	Lunch	Lunch	Lunch	Lunch		
1:30-4:00 Visit Art Museum	1:30-4:00 Philadelphia Phillies Baseball Game	Free Afternoon 6:30-8:00 Game Night	1:30-4:00 Visit Historic Philadelphia	Free Evening		

INTENSIVE ENGLISH LANGUAGE PROGRAM

Super Intensive English

About Super Intensive English Language Program

- Improve your English in an immersive environment in a short time – strengthen your reading, writing, listening and speaking skills in only 4-weeks.

Dates

- July 7-August 3, 2019

Costs

- \$2,250
- Includes tuition and fees, materials, regional trips, and on-campus activities.

Housing

- Student housing is available for an additional cost.

Questions?

- Contact ielp.special.temple.edu
- WeChat微信: TempleIELP



WELCOME TO
YOUR
STUDENT
CENTER

INTENSIVE ENGLISH LANGUAGE PROGRAM

Graduate Academic English

Graduate Academic English

- Master the many challenges you face as an international graduate student, including fine-tuning your writing, presentation, listening, and pronunciation skills

Dates

- July 22-August 16, 2019

Specialize Your Skills

- Short-time study to improve your skills, learn about US culture, and practice pronunciation and presentations.

Costs

- \$2,250
- Includes tuition and fees, materials, regional trips, and on-campus activities.

Housing

- Student housing is available for an additional cost.

Questions?

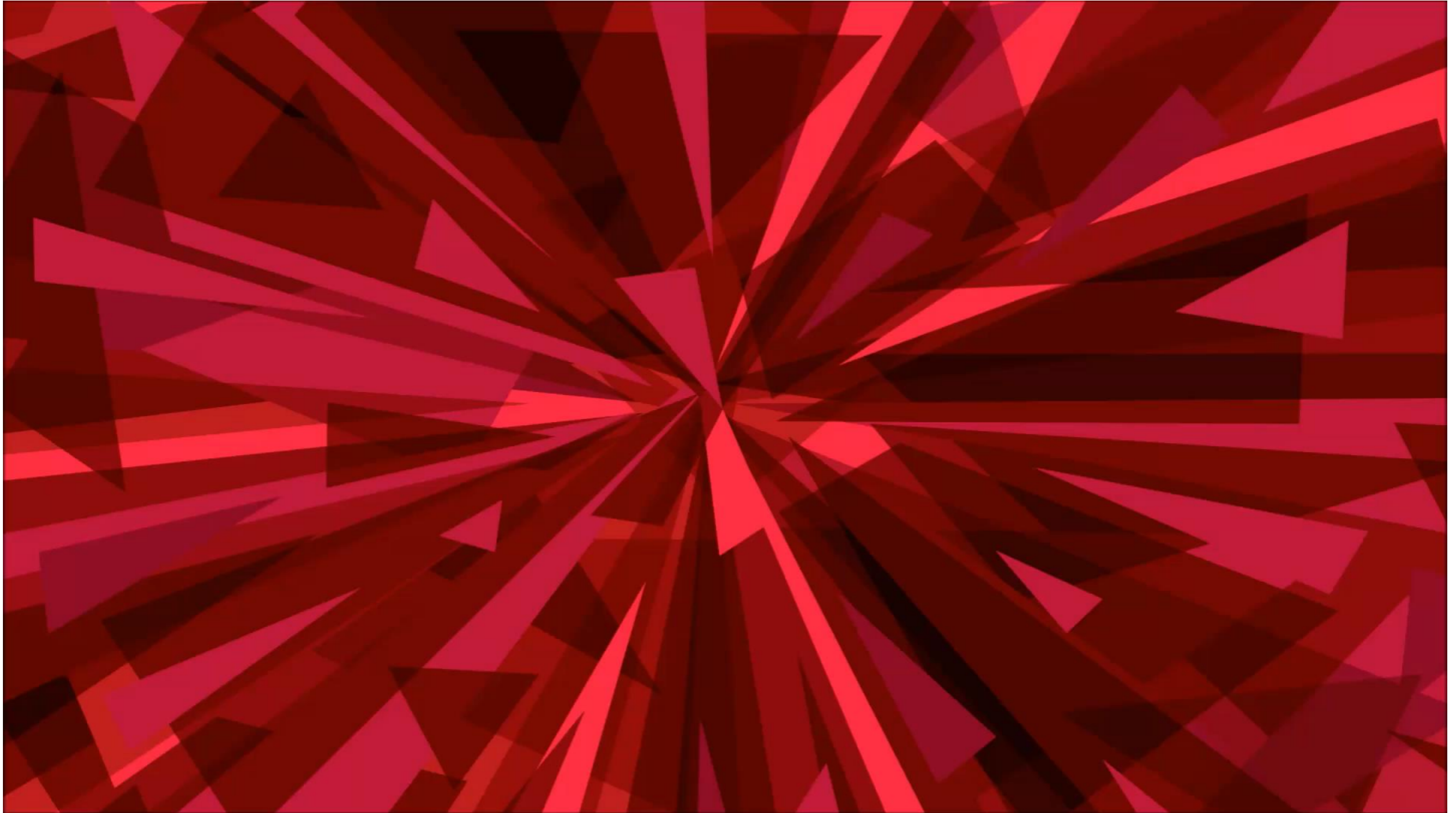
- Contact ielp.special.temple.edu
- WeChat 微信: TempleIELP



DUAL BACHELOR'S MASTER'S DEGREE PROGRAM

- **DBMD is an accelerated dual degree program**
- **Earn your Bachelor's from home institution, your Master's from Temple**
- **Apply in your junior (3rd) or senior (4th) year**
- **Complete both degrees in only 5 years**

EXPERIENCE DBMD



HOW DOES DBMD WORK?

Spend 3 or 4 years at your home institution and 2 years at Temple. At the end of the program, you have a bachelor's degree from your home university and a master's degree from Temple.

Home University's Undergraduate Degree

Freshman - Junior
Years

Senior Year =
1st Graduate Year

2nd Graduate Year

Temple University's Master's Degree

DBMD BENEFITS

- **Scholarships**
- **GRE waived (except for Fox School of Business)**
- **Bachelor's and Master's in 5 years**
- **Support with application, housing, and academic advising**
- **Graduate Assistantships available in 2nd year (up to 100% tuition remission and stipend)**
- **Career support**
- **STEM majors offer the opportunity to stay in the U.S. and work for up to 3 years after graduating on Optional Practical Training (OPT)**
- **DBMD student trips and activities**

DBMD Plus

Students in their 4th year and also recent graduates can apply and receive many of the same benefits:

- **Scholarships**
- **GRE waiver (except Fox School of Business)**
- **Application support**
- **Graduate Assistantships**
- **Career support**
- **STEM majors and OPT extension**
- **DBMD student trips and activities**

DBMD REQUIREMENTS

- **Open to students in 3rd or 4th year with 3 or fewer remaining courses**
- **GPA 3.0/4.0 (Preferred)**
- **TOEFL Internet-based (iBT) 79 (Minimum)**
 - Fox Business School 100
 - Media and Communications 100
- **IELTS Academic 6.5**
 - Fox Business School 7.5
 - Media and Communications 7
- **GMAT or GRE required for Business applicants; at least 65th percentile**

MASTER'S OPTIONS

**Partial List*

Business

- Business Analytics
- Financial Analysis
- Financial Analysis & Quantitative Risk Management
- Innovation Management & Entrepreneurship
- Marketing
- Statistics

Science & Technology

- Bioinformatics (PSM)
- Bioinnovation (PSM)
- Biotechnology (PSM)
- Computer Science
- Information Science & Technology

Sport & Tourism

- Sports Business
- Hospitality Management

Media & the Arts

- Architecture
- Journalism
- Media Studies & Production
- MediaXarts: Cinema for New Technologies
- Musical Theater Studies

Engineering

- Bioengineering
- Civil Engineering
- Computer & Systems Security (PSM)
- Electrical Engineering
- Environmental Engineering
- Mechanical Engineering

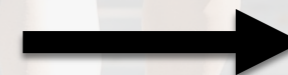
Professional Sciences

- Biomedical Sciences
- Medicinal Chemistry/Drug Discovery
- Pharmacodynamics
- Pharmaceuticals
- Regulatory Affairs/Quality Assurance

Liberal Arts

- Economics
- Geographic Information Systems (PSM)
- Liberal Arts
- Political Science
- Sociology

DBMD Brochures!



DBMD ACTIVITIES



DBMD ACTIVITIES

DBMD STUDENTS

Shikai Fang



Professors supervise Master's students and let them help with frontier research. I know this will be a great help when I apply for my Ph.D.”

Bachelor's: Statistics and Computer Science,
University of Science and Technology of
China

Master's: Computer Science
Temple University



DBMD STUDENTS

Jin Xu



The DBMD program allowed me to start graduate school before finishing a bachelor's degree and even without taking the GRE.”

Bachelor's: Science and Technology
China University of Geosciences

Master's: Geography and Urban Studies
Temple University



DBMD ALUMNI

Dehua Lai

**Senior Software Engineer, Ai Cure Tech
New York City**



I was referred by a Temple alumnus, who had been working in the same lab as me during graduate school, to my current job.”

Bachelor's: Automation, University of Science & Technology of China

Master's: Electrical Engineering,
Temple University



DBMD ALUMNI

Pingting Shang

Associate Application Engineer at Schneider Electric
Reading, USA



You will love Temple. My time there was a treasure, and I know it will have a positive impact on the rest of my life.”

Bachelor's: Automation
University of Science & Technology of China

Master's: Electrical Engineering
Temple University



DBMD ALUMNI

Jiang Zhan

**Regulatory Affairs Specialist, AstraZeneca
Beijing, China**



Temple was very exciting. I learned innovative skills and worked in advanced labs. It gave me many career advantages.”

Bachelor's: Biotechnology
China Pharmaceutical University

Master's: Biomedical Sciences
Temple University



DBMD ALUMNI

Chih-Yi Chang

**Vacation Consultant, Minor Hotel Group
Bangkok, Thailand**



I've been working within the hotel industry during past few years and I have met a lot of Temple alumni. Join Temple, join DBMD!”

Bachelor's: Business Administration,
National Taiwan University of Science &
Technology

Master's: Tourism & Hospitality Management
Temple University



DBMD ALUMNI CAREERS

- Facebook
- Instagram
- BuzzFeed
- JP Morgan Chase
- Deloitte
- Adidas
- Pfizer
- Bayer
- Comcast
- AIG
- AstraZeneca
- Lincoln Financial Group
- PNC Bank
- Hewlett Packard
- Ernst & Young
- Barclay's Bank
- Blackrock
- Minor Hotel Group
- Citco Group

** 20% enter highly ranked PhD programs*

DBMD APPLICATION

- **Spring Application Deadline: October 15**
- **Fall Application Deadline: March 15**
- **Academic Calendar**
 - Spring Semester: January – May
 - Fall Semester: August – December
- **Begin Application Process:**
 - <http://www.temple.edu/international/gp/apply/dbmd.html>

QUESTIONS?

Temple University

Office of Global Programs

1801 N. Broad Street

403 Conwell Hall

Philadelphia, PA 19122 USA

Tel: +1-215-204-9570

global.programs@temple.edu

www.temple.edu/international/gp

Temple University China Office

B-1101 Tsinghua Tongfang Technology Plaza,

Beijing 100083, China

Tel: 010-83185879/82378802

china@temple.edu

For Short-Term Programs

Intensive English
Language Program

在中国联系方式：

微信：TempleIELP



SEE YOU IN PHILADELPHIA!